



Portsoy Ni-Cu-Co Project, Scotland

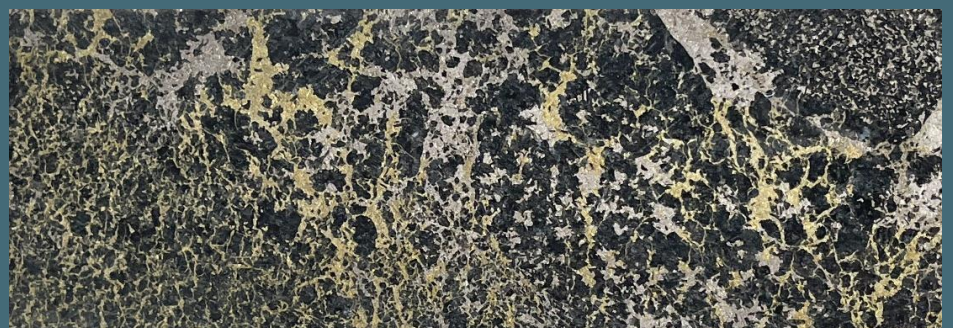
- Discovered in the 1970s by EVL, a JV between Goldfields and Rio Tinto
- 24 holes drilled (3,600m) in 2023 / 2024 by Peak Nickel Ltd confirmed the presence of massive, semi-massive and disseminated nickel – copper – cobalt mineralization.
- Only drilled to 180m depth – system remains open along strike and to depth
- Option to earn a 100% interest, subject to a capped 1% NSR Royalty
- Multiple targets – Phase 1 drilling completed – ASSAYS PENDING



Hole ID	From (m)	Length (m)	Ni (%)	Cu (%)	Co (ppm)
RBD001	40.52	12.48	0.63	0.54	403
incl.	45.00	6.00	0.96	0.73	601
RBD002	50.60	35.40	0.71	0.30	473
incl.	70.00	12.00	1.42	0.54	929
RBD004	112.00	12.26	1.02	0.83	633
incl.	118.29	5.97	1.92	1.50	1197
RBD009	51.60	13.79	1.39	0.53	785
RBD016	30.00	59.00	0.32	0.19	291
incl.	74.00	9.00	1.13	0.73	1056

Table showing selected intersects from the 2023 / 2024 drill program

Net texture nickel-copper-cobalt sulphide mineralisation
Portsoy Project, Scotland



WINSHEAR

Thunder Bay Gold Project, NW Ontario

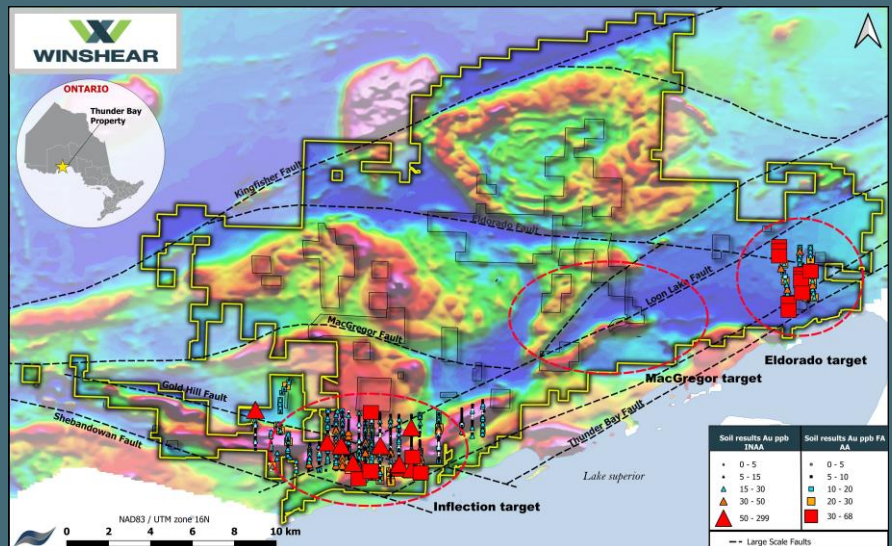
- Eastern extent of the Archean Shebandowan Greenstone Belt, which hosts Gold X2's Moss Gold Project, Delta Resources' Eureka Gold Project and Thunder Gold's Tower Mountain Project
- Option to earn a 100% interest, subject to a 2% NSR Royalty
- Regional magnetics demonstrate highly prospective geological environment
- Potential for orogenic gold, VMS, and nickel-copper-cobalt mineralization
- 2025 field program (regional till and soil sampling) identified a number of targets for follow-up, including the 6km long Inflection Target in the central part of the project area, the MacGregor and El Dorado Targets at the eastern end of the project area, and the Kingfisher Fault area along the northern edge of the project

2026 Program Underway

1,500 soil samples covering Inflection, MacGregor, El Dorado and Kingfisher

25 till samples along the Kingfisher Fault

Airborne drone magnetic surveys over Inflection and El Dorado



MANAGEMENT AND DIRECTORS

Stephen Leahy	Chairman
Richard Williams	CEO & Director
Pat Varas	President & Director
Mark Sander	Director
Daniele Spethman	Director
Andrew MacRitchie	Director
Krysta Chapman	CFO

CORPORATE INFORMATION

Listing / Symbol	TSX-V: WINS
Issued & Outstanding Warrants	69,251,965
	6,655,667 (12c)
	12,959,000 (20c)
Stock Options	3,700,000 (13c)
	2,000,000 (15c)
Fully Diluted	94,566,632

Suite 1056 – 409 Granville St.
Vancouver B.C. Canada V6C 1T2
www.winshear.com
irene@winshear.com

Richard Williams
CEO & Director
Cell: +44 7548 759 241 or
Toll free: +1 877 315 0580

Note: This document may contain "forward-looking statements" within the meaning of Canadian securities legislation and the United States Private Securities Litigation Act of 1995. These forward-looking statements are made as of the date of this document and the Company does not intend, and does not assume any obligation, to update these forward-looking statements, except as required by law. Please refer to the Company's continuous disclosure filings under its issuer profile on SEDAR+: www.sedarplus.ca. The Company makes every effort to ensure that the information provided herein is accurate and up-to-date; however, this information is subject to change without notice. Last updated: June 12, 2026.