



**WINSHEAR GOLD**  
VALUE DISCOVERY

TSX-V:WINS  
[www.winshear.com](http://www.winshear.com)



# GABAN PROJECT - PERU AN EMERGING GOLD DISCOVERY

Mark Sander - President

# FORWARD LOOKING STATEMENT



This presentation may contain forward-looking statements which involve known and unknown risks, uncertainties and other factors which may cause the actual results, performance, or achievements to be materially different from any future results, performance or achievements expressed or implied by such forward-looking statements.

Forward looking statements may include statements regarding exploration results and budgets, resource estimates, work programs, strategic plans, market price of metals, or other statements that are not statements of fact.

Although the expectations reflected in such forward-looking statements are reasonable, there is no assurance that such expectations will prove to have been correct. Various factors that may affect future results include, but are not limited to: fluctuations in market prices of metals, foreign currency exchange fluctuations, risks relating to exploration, including resource estimation and costs and timing of commercial production, requirements for additional financing, political and regulatory risks. Accordingly, undue reliance should not be placed on forward-looking statements.

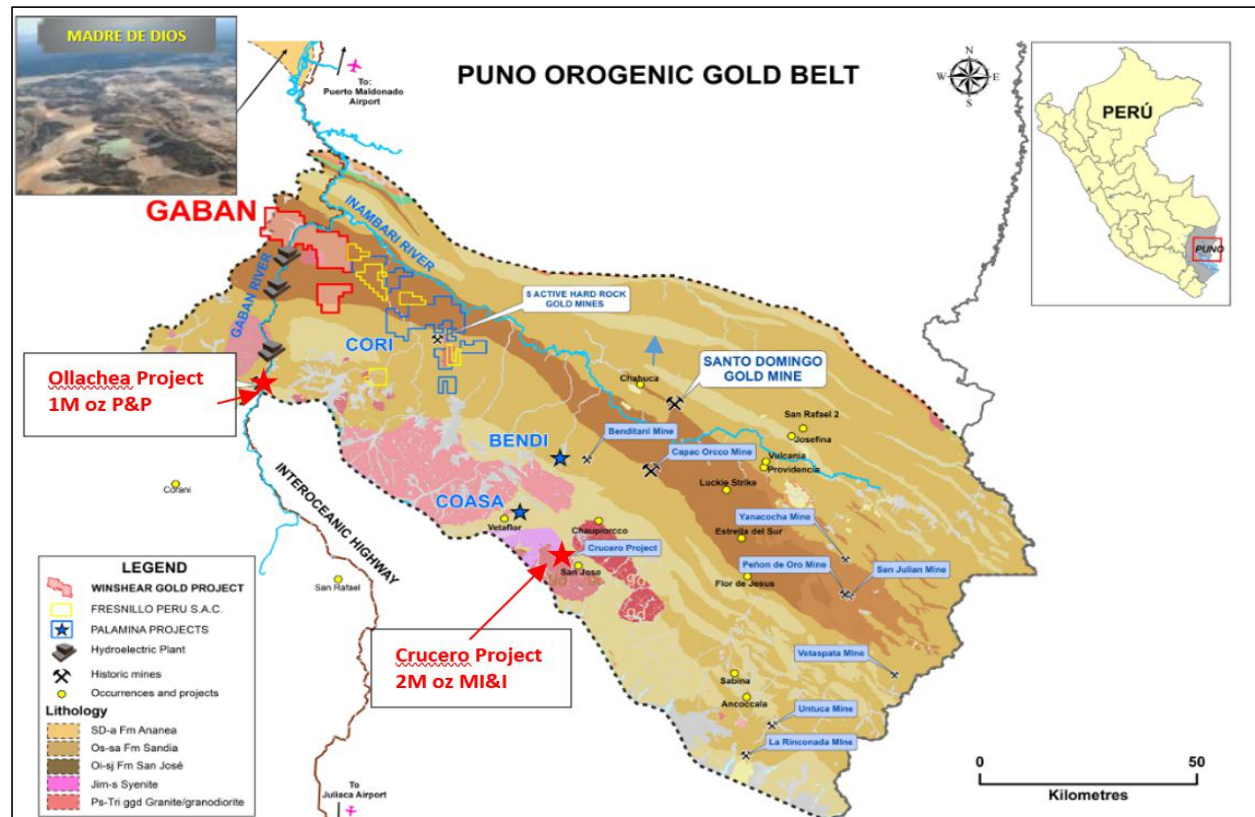
All technical information contained within this presentation has been reviewed and approved for disclosure by Richard Williams, M.Sc., P.Geol., Winshear's Qualified Person as designated by NI 43-101.

Readers are further referred to the technical reports on the company's website and on SEDAR for more detailed information.

# INTRODUCING THE GABAN PROJECT IN THE PUNO OROGENIC GOLD BELT

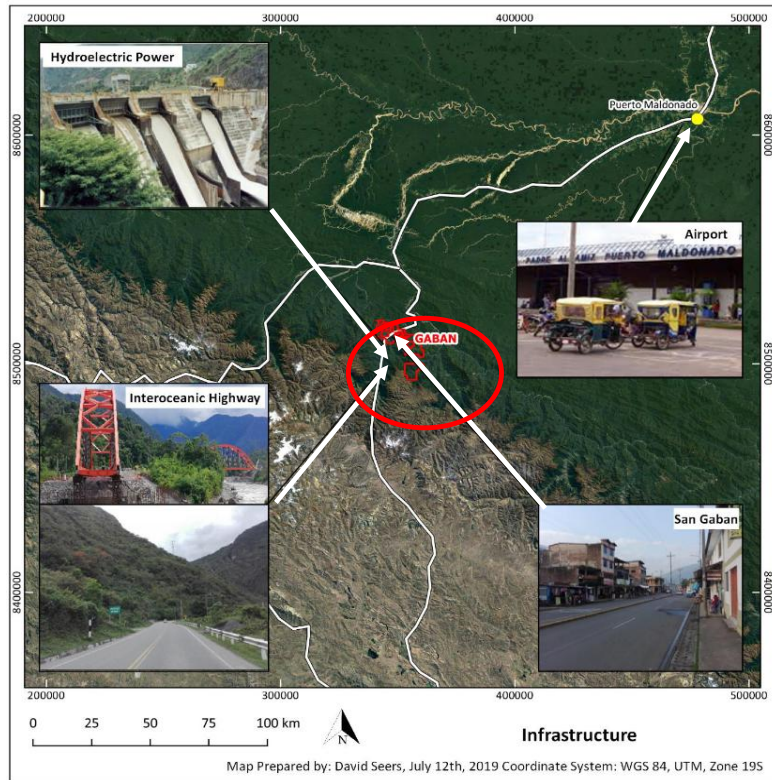


- The Gaban and Inambari Rivers drain the Puno Orogenic Gold Belt into the giant Madre de Dios alluvial goldfields to the north
- The Gaban Project is the closest bed rock target upstream from Madre de Dios
- One significant past producer— Santo Domingo
- Two Million Oz+ drilled deposits upstream – Ollachea and Crucero
- Multiple smaller historic mines and other exploration projects

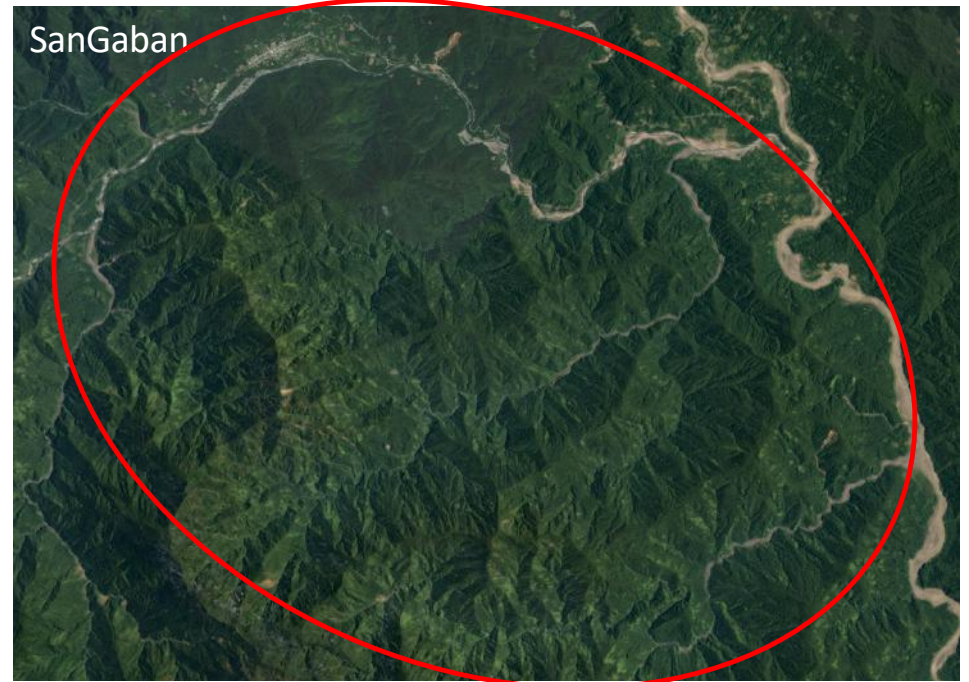


TSX-V:WINS

# REGIONAL INFRASTRUCTURE IS EXCELLENT



“Last Mile” is currently accessible only during dry season and on foot



# INFORMAL ALLUVIAL MINERS ARE WORKING CREEKS IN THE GABAN PROJECT AREA

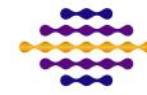


**WINSHEAR GOLD**  
VALUE DISCOVERY



TSX-V:WINS

# RELIQS OF HISTORIC VEIN MINING AT GABAN ARE OBSCURED BY RAIN FOREST



**WINSHEAR GOLD**  
VALUE DISCOVERY

Abandoned Adit



Ruins of Plant



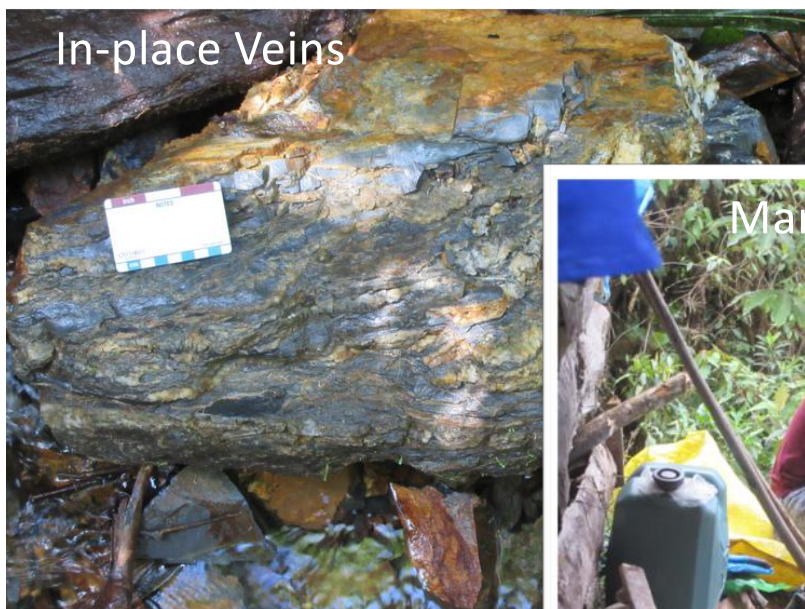
Parts of Stamp Mill



# EXPLORATION GOLD PANNING



Outcropping veins at Gaban can be crushed and panned to reveal fine gold, yielding real-time indication of mineralization



In-place Veins

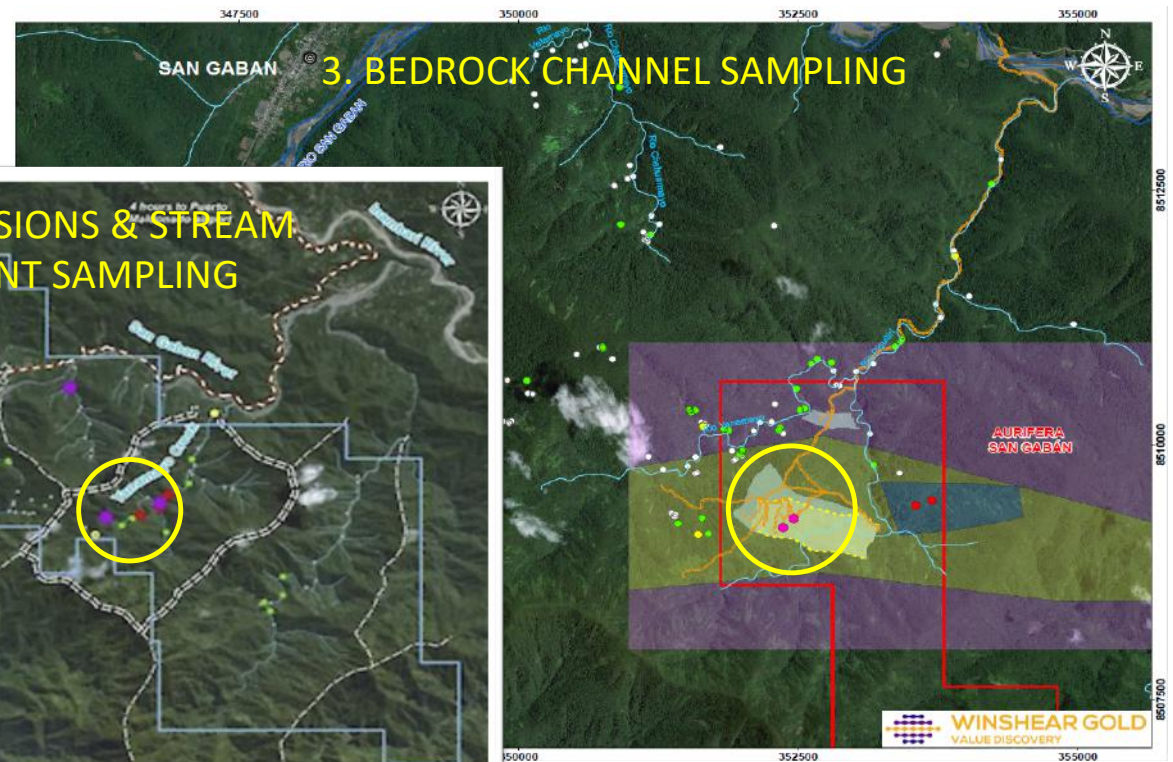
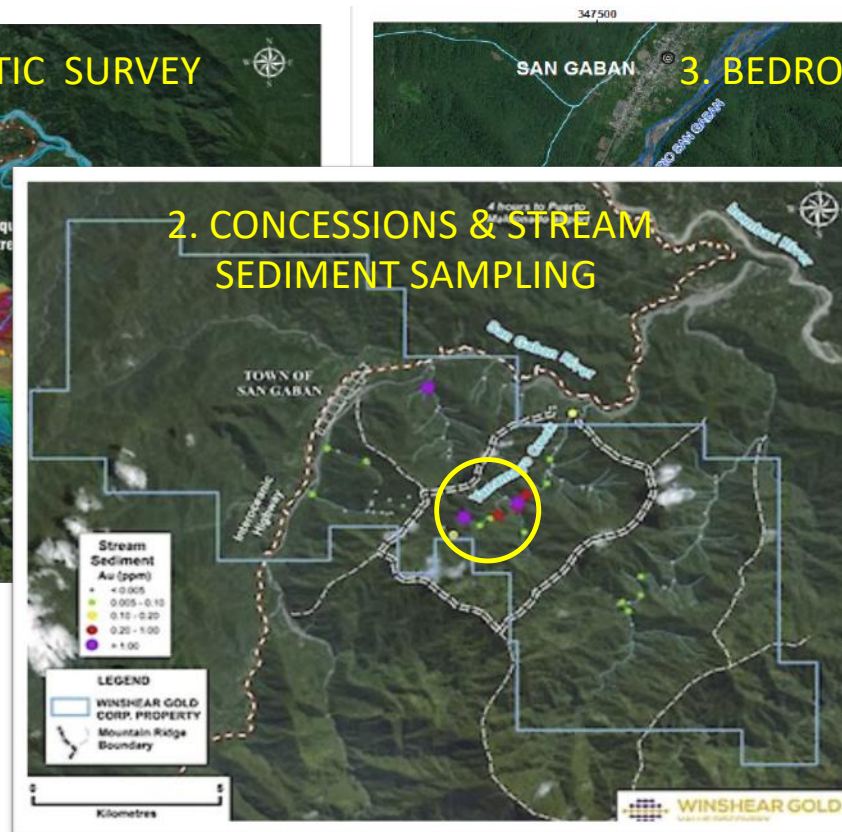
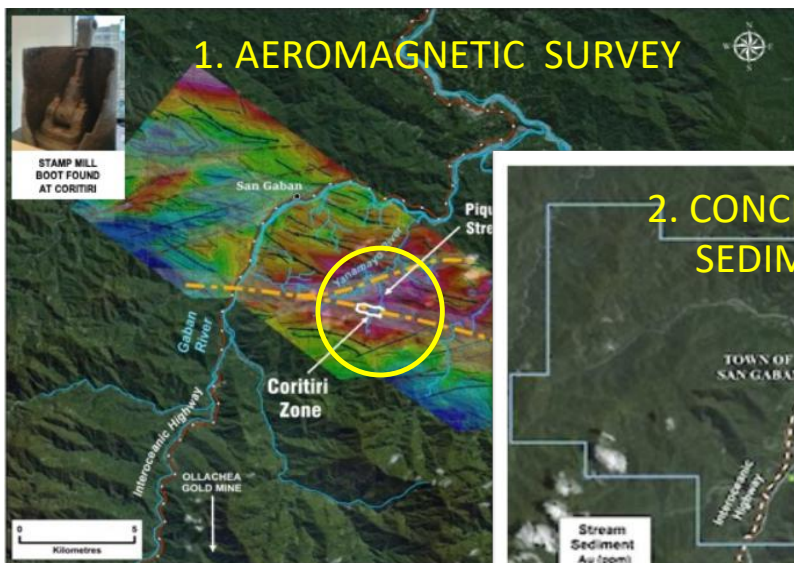


Manual Crushing



Panned Gold

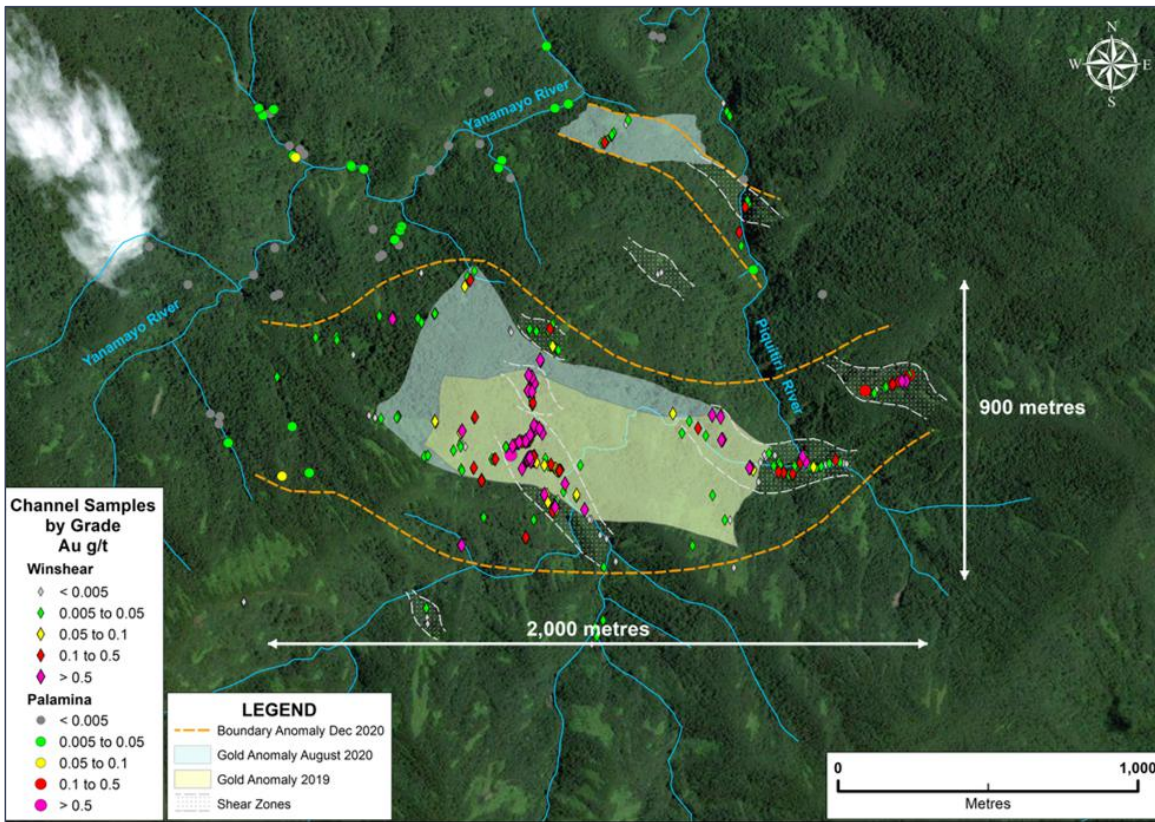
# PALAMINA'S PIONEERING WORK



TSX-V:WINS



# WINSHEAR SAMPLING 2019-2020 DEFINES CORITIRI AU ANOMALY

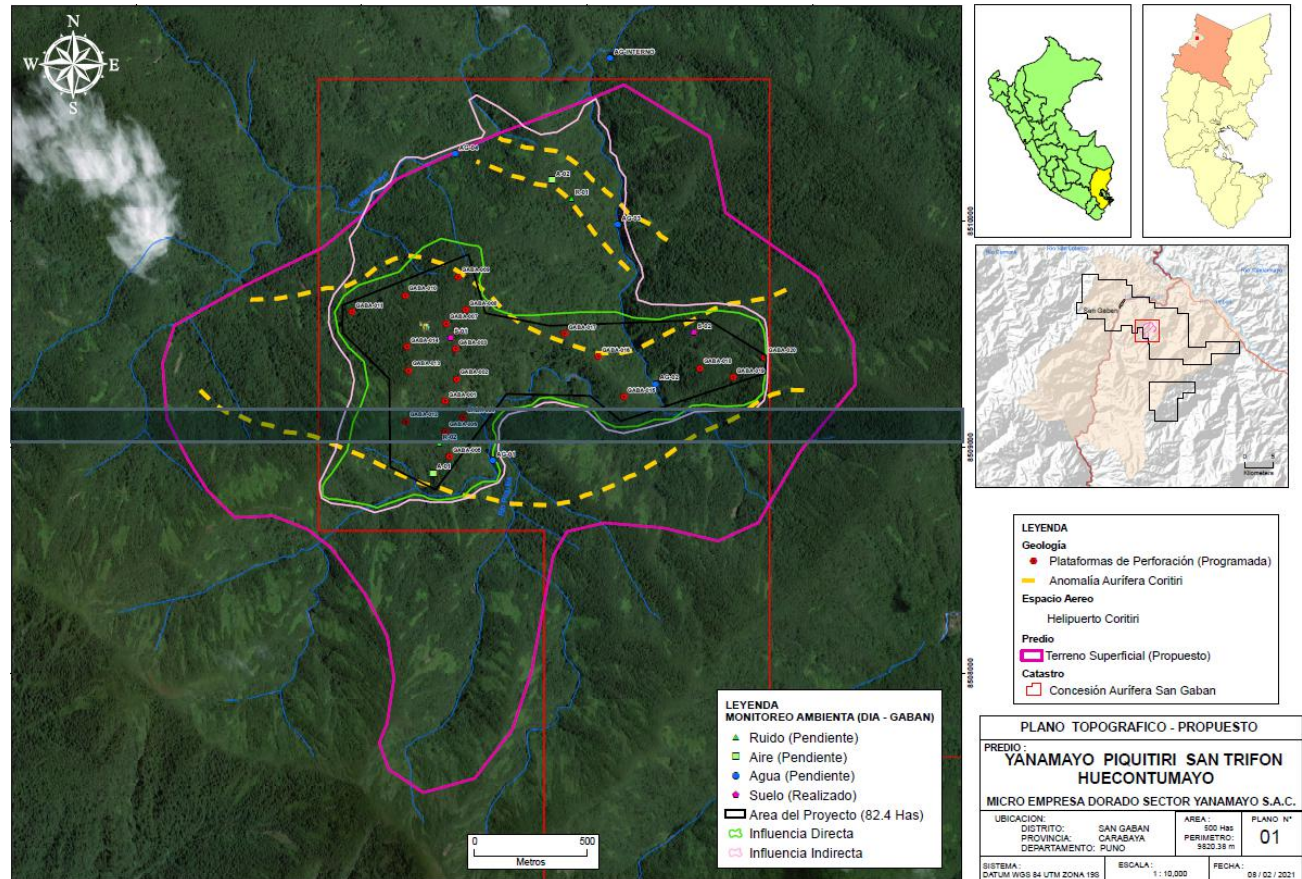


- 705 channel samples in 2019-2020 define emerging Coritiri Au anomaly
- Sample values up to 15.8 g/t Au, in veins and veinlets
- Mineralized veins extend over an area 900m by 2,000m, currently open, especially to east
- Will return to field to extend sampling in coming dry season

# INTENDING TO DRILL IN 2021 PERMITTING UNDERWAY



- Up to 20 drill diamond drill platforms
- Helicopter supported to minimize surface disturbance
- Test the length and width of the anomaly



TSX-V:WINS

## GABAN KEY POINTS



- A demonstrated source of bedrock gold for the regionally extensive alluvial goldfields on the eastern side of the Andes
- Abundant evidence of historical underground mining & processing
- 2000 m by 900 m area of anomalous gold in veins & veinlets
- Permitting for first ever drill holes to test the anomaly in 2021

THANK-YOU



---

If you have questions, please send them to:  
Mark Sander  
*mark@winshear.com*

TSX-V:WINS