



**WINSHEAR GOLD**  
VALUE DISCOVERY

TSX-V:WINS  
[www.winshear.com](http://www.winshear.com)  
October 2024



GABAN GOLD PROJECT, PERU  
FIRST EVER DRILL PROGRAM Q4, 2024

# FORWARD LOOKING STATEMENT



This presentation may contain forward-looking statements which involve known and unknown risks, uncertainties and other factors which may cause the actual results, performance, or achievements to be materially different from any future results, performance or achievements expressed or implied by such forward-looking statements.

Forward looking statements may include statements regarding exploration results and budgets, resource estimates, work programs, strategic plans, market price of metals, or other statements that are not statements of fact.

Although the expectations reflected in such forward-looking statements are reasonable, there is no assurance that such expectations will prove to have been correct. Various factors that may affect future results include, but are not limited to: fluctuations in market prices of metals, foreign currency exchange fluctuations, risks relating to exploration, including resource estimation and costs and timing of commercial production, requirements for additional financing, political and regulatory risks. Accordingly, undue reliance should not be placed on forward-looking statements.

All technical information contained within this presentation has been reviewed and approved for disclosure by Patricio Varas, P.Geol, Winshear's Qualified Person as designated by NI 43-101.

Readers are further referred to the technical reports on the company's website and on SEDAR for more detailed information.

# MANAGEMENT & DIRECTORS



---

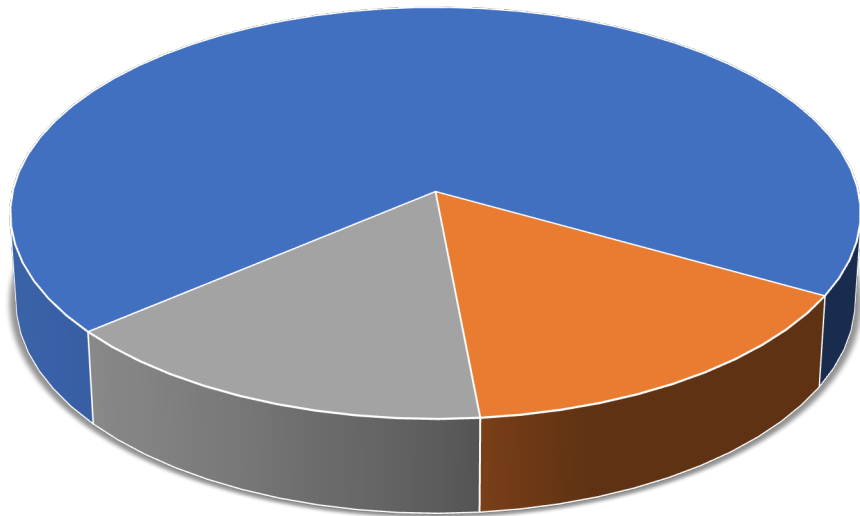
Stephen Leahy - Chairman	Former CEO & Chairman of North American Tungsten, Director of Oroco Resource Corp
Richard Williams - CEO & Director	Co-Founder of Winshear, former CEO & Director of Cornish Metals
Patricio Varas - President & Director	Former CEO of Western Potash, and executive management with Far West Mining (Santo Domingo Sur). Also involved in discovery of Diavik Diamond Mine.
Mark Sander - Director	Former VP Strategy and Planning for BHP Copper. Founding Partner of Plinian Capital
Andrew Thomson - Director	CEO of Palamina Corp, and former CEO of Soltoro (acquired by Agnico Eagle in 2015)
Danièle Spethmann - Director	Former CEO of Warrior Gold
Krysta Chapman - CFO	Formerly Treasurer of Sandstorm Gold, also CFO of Ideon Technologies

TSX-V:WINS

# CORPORATE STRUCTURE



## Share Distribution



■ Float ■ Management & Directors ■ Palamina Corp

Ticker Symbol	TSXV: WINS
Issued & Outstanding	31,418,632
Warrants	5,000 @ \$0.60
Stock Options	2,100,000 @ \$0.13
Management & Directors	5,162,793 (15.4%)
Palamina Corp.	5,162,793 (15.4%)
Fully Diluted	33,523,632
Cash (Sept. 1 <sup>st</sup> , 2024)	\$3,000,000

TSX-V:WINS

# PUNO OROGENIC GOLD BELT (POGB)



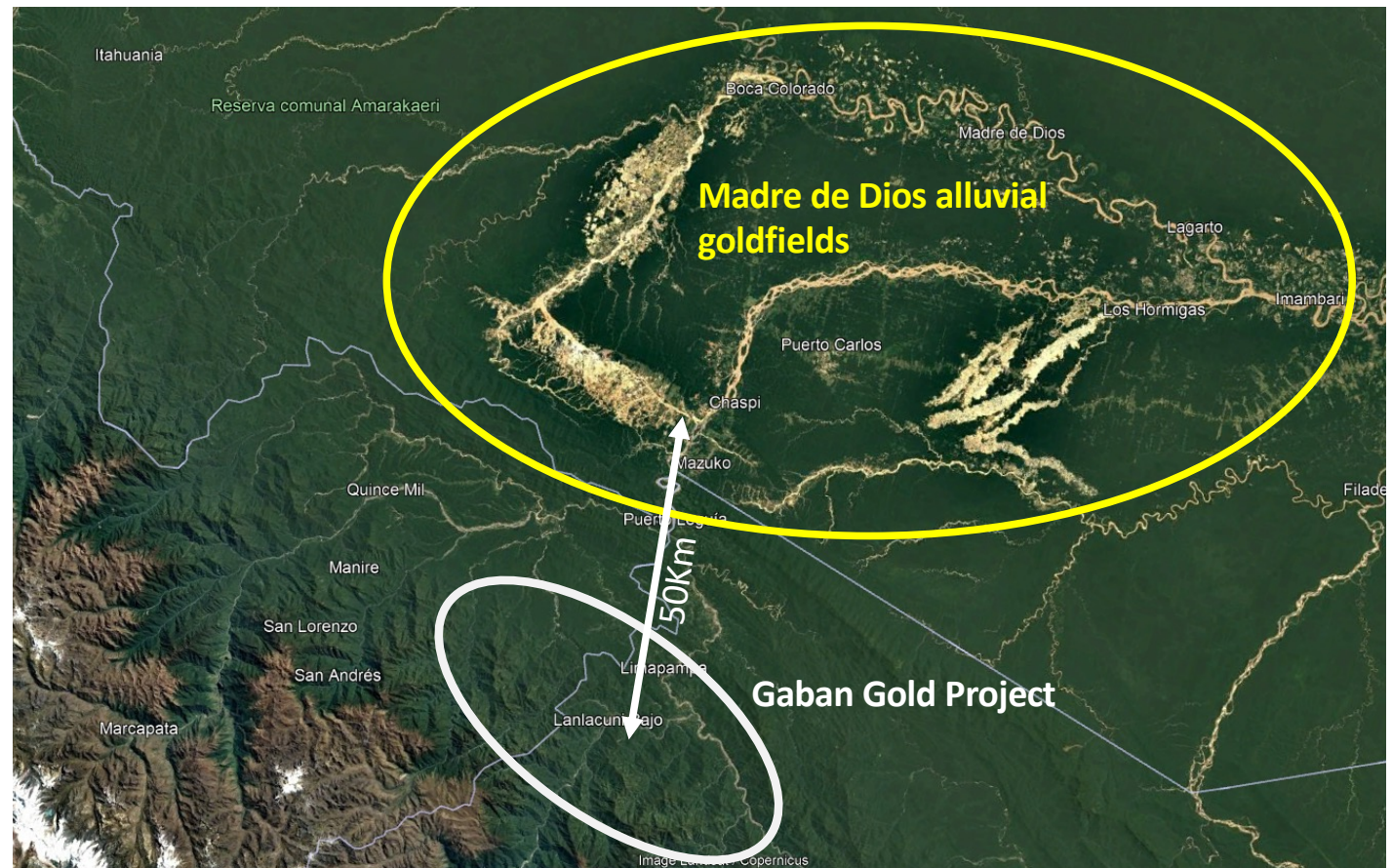
- The POGB is located upstream from the prolific Madre de Dios alluvial goldfield in the Amazon basin
- The POGB is host to La Rinconada gold mine and Ollachea gold deposit



# GABAN GOLD PROJECT



- Gaban is located on the eastern flank of the Andes
- 50km south of the 700km<sup>2</sup> Madre de Dios alluvial goldfields



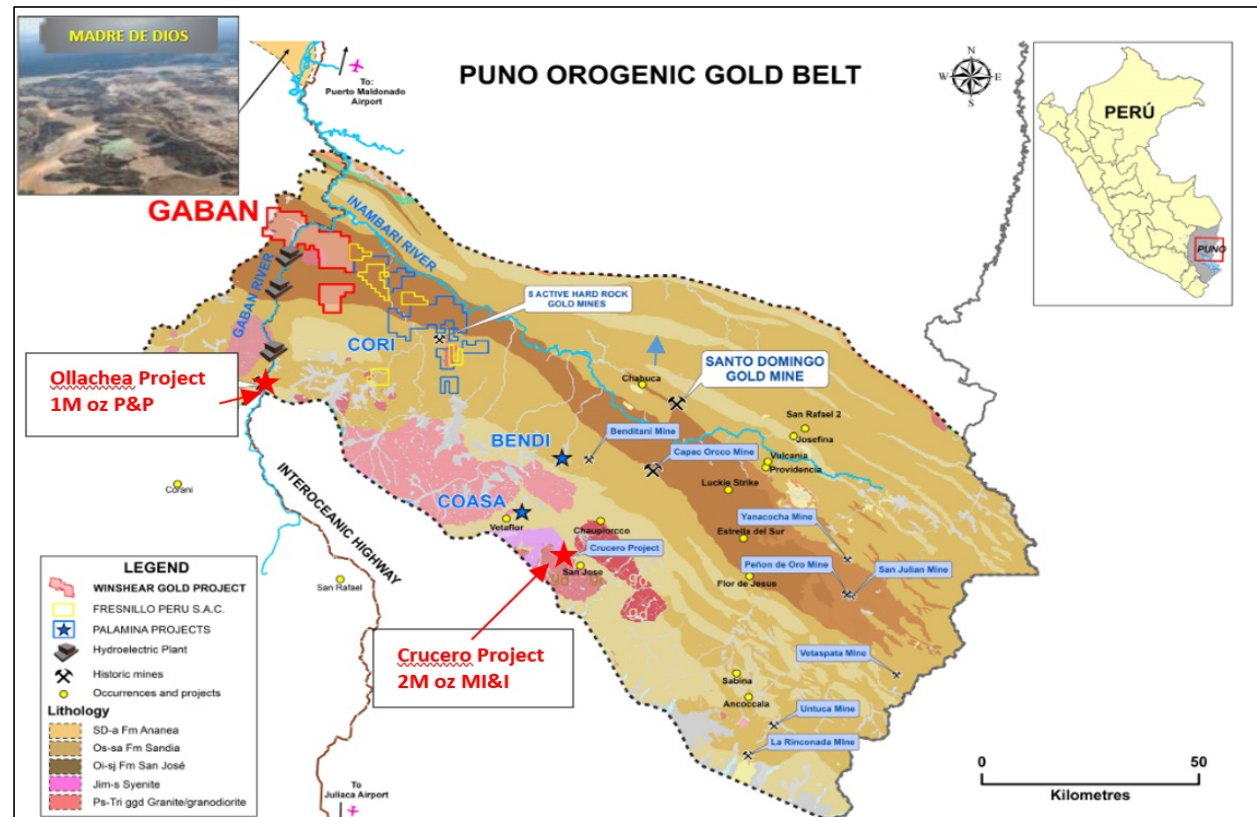
TSX-V:WINS

# GABAN GOLD PROJECT - OVERVIEW

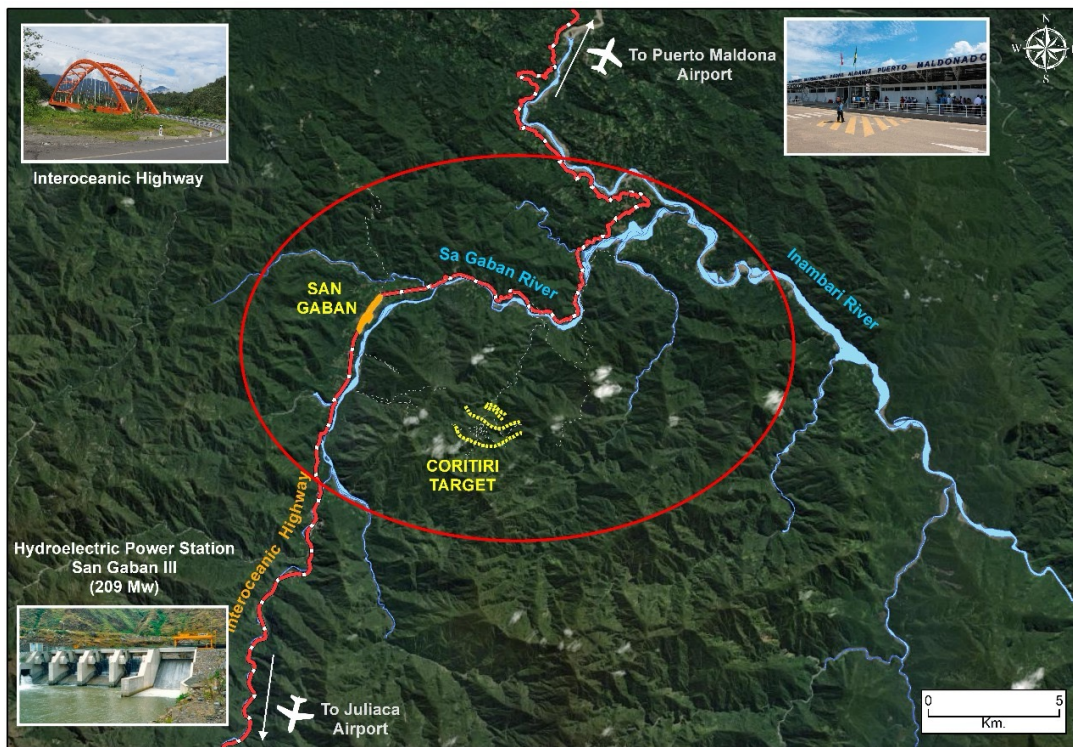


- The Gaban and Inambari Rivers drain the Puno Orogenic Gold Belt into the giant Madre de Dios alluvial goldfields to the north
- The Gaban Project is the closest bed rock target upstream from Madre de Dios
- One significant past producer – Santo Domingo in the early 1900s
- Two Million Oz+ drilled deposits upstream – Ollachea and Crucero
- Multiple smaller historic mines and other exploration projects

TSX-V:WINS



# GABAN GOLD PROJECT - INFRASTRUCTURE



- San Gaban town located along Gaban River
- 3 hydroelectric power stations
- Main highway from Peru into Brazil passes through the project area
- Main Coritiri target located 5-7km southeast of Gaban town



# GABAN GOLD PROJECT – ALLUVIAL GOLD

---



Coarse gold recovered from alluvial gold deposits downstream from the Coritiri Target

# HISTORIC HARDROCK MINING

Abandoned Adits



Remnants of gold plant



Parts of Stamp Mill



# GABAN – GOLD PANNING OF VEINS

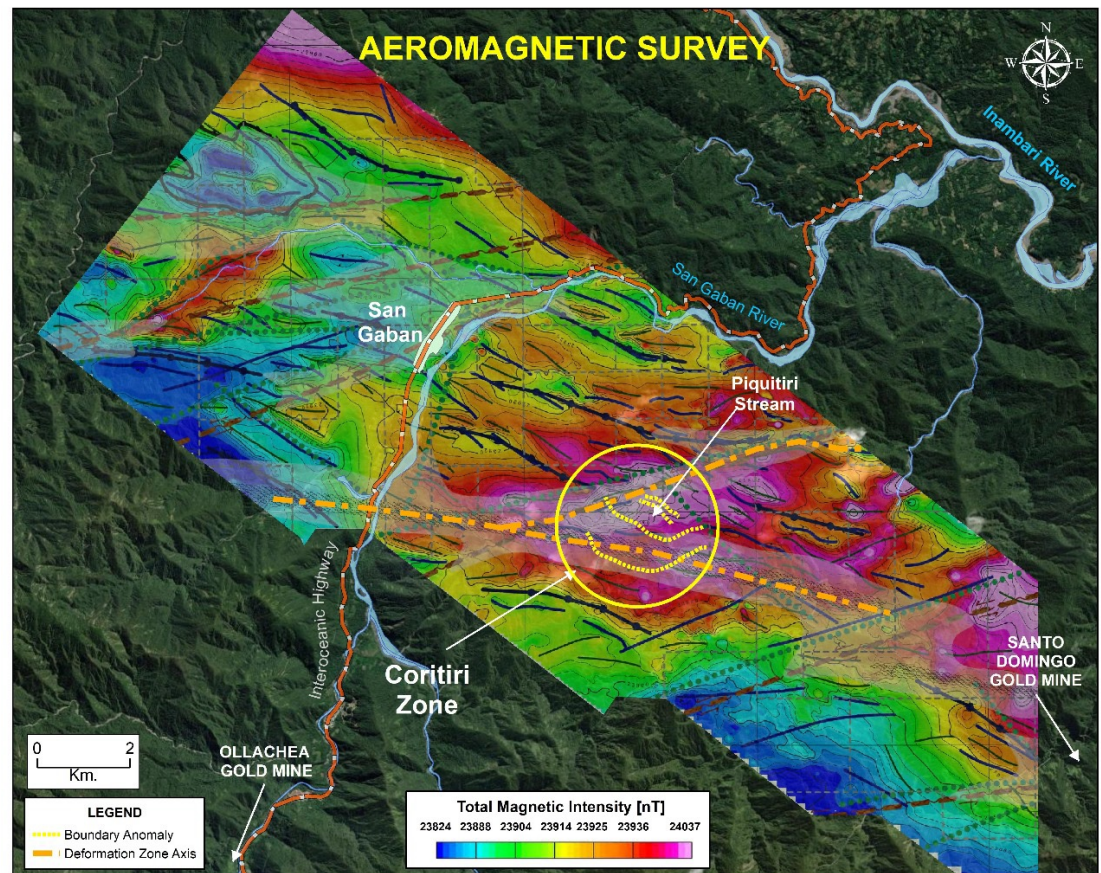


Outcropping veins at Gaban are crushed and panned to determine the presence of fine gold, providing real-time indication of bedrock mineralization



# GABAN – MAGNETIC ANOMALIES

- Regional magnetic anomaly located beneath the Yanamayo and Piquitiri rivers
- Anomaly located at the intersection ESE and ENE trending magnetic trends

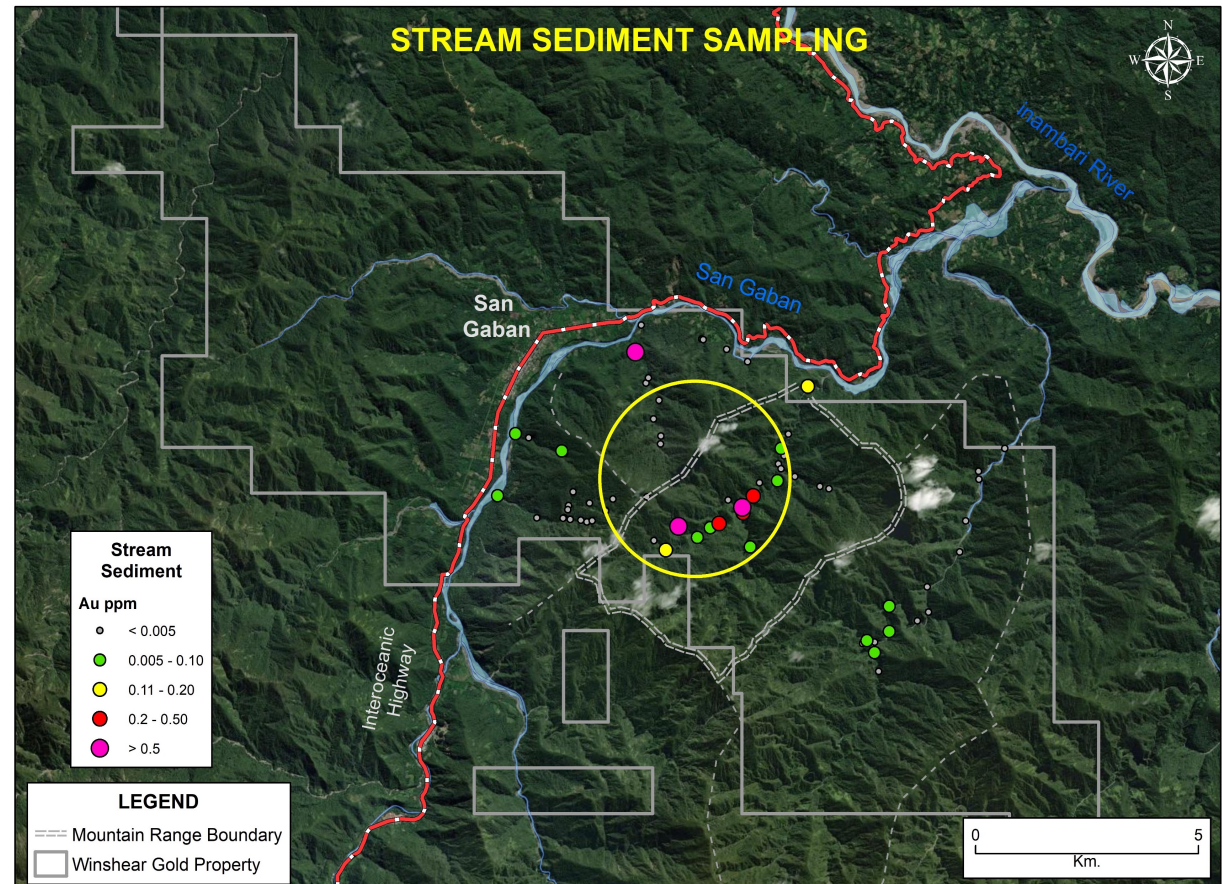


# GABAN – GOLD IN STREAM SEDIMENTS



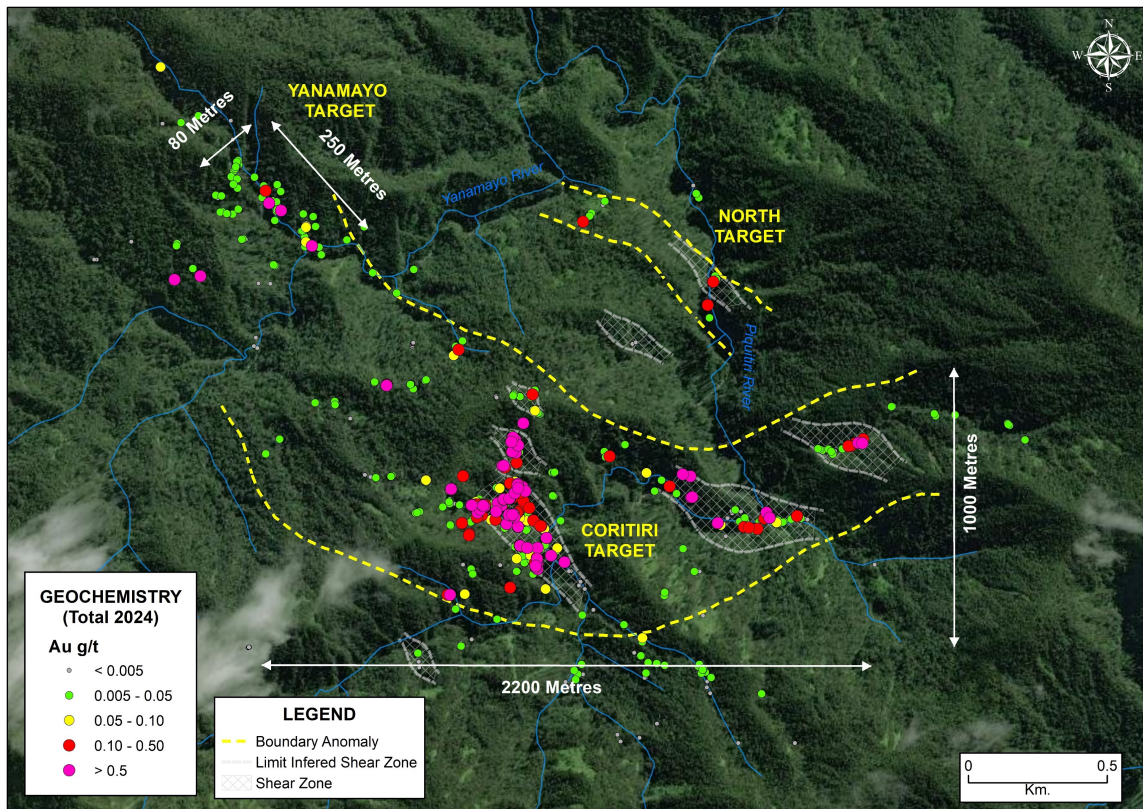
**WINSHEAR GOLD**  
VALUE DISCOVERY

- Stream sediment sampling identified a 5km long anomaly along the Yanamayo river
- Sample results up to 5g/t Au from stream sediments



TSX-V:WINS

# GABAN – OUTCROP CHANNEL SAMPLING

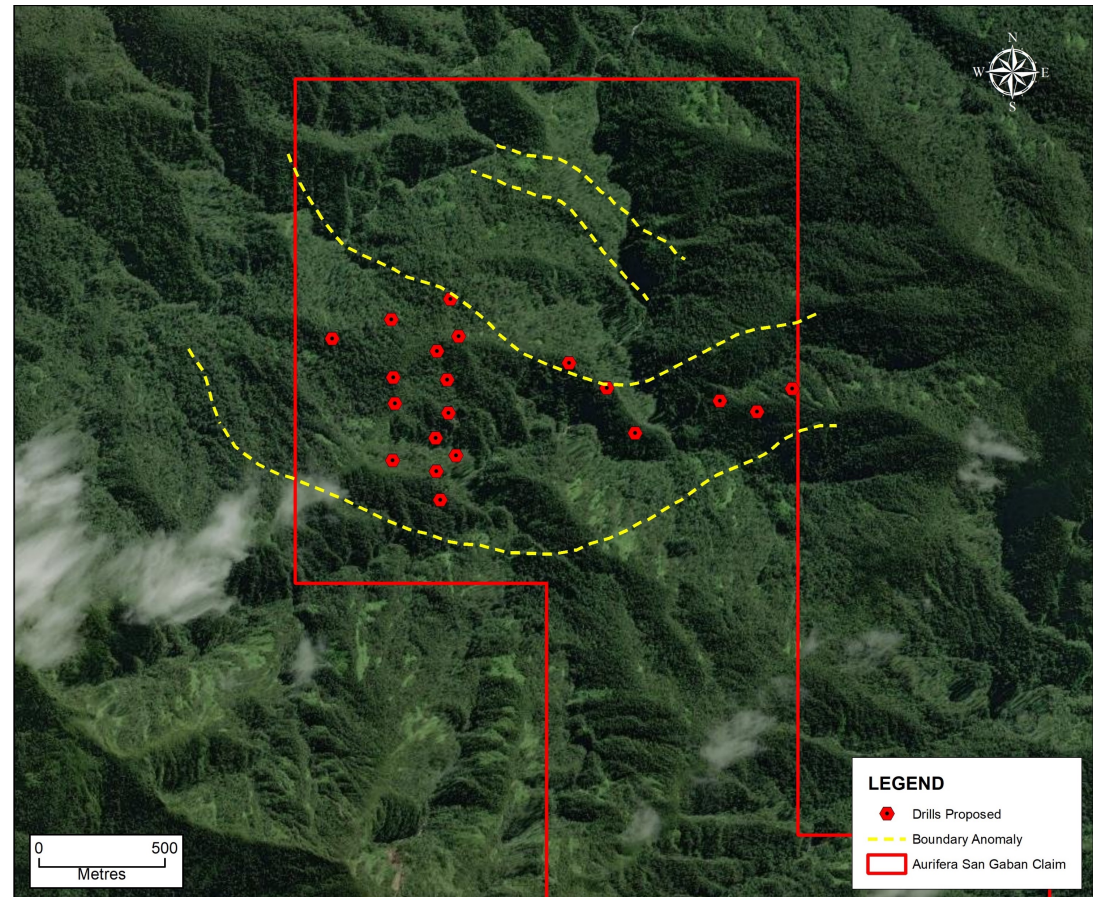


- 1120 channel samples define the main Coritiri Au anomaly and satellites targets
- Sample assays up to 32.35 g/t Au, in veins and veinlets
- Mineralized veins extend over an area 1,000 m by 2,200 m, currently open, especially to east and south
- Yanamayo anomaly about 500 m to northwest in area of stream sediment anomalies and artisanal placer mining

# GABAN – CORITIRI DRILL PROGRAM



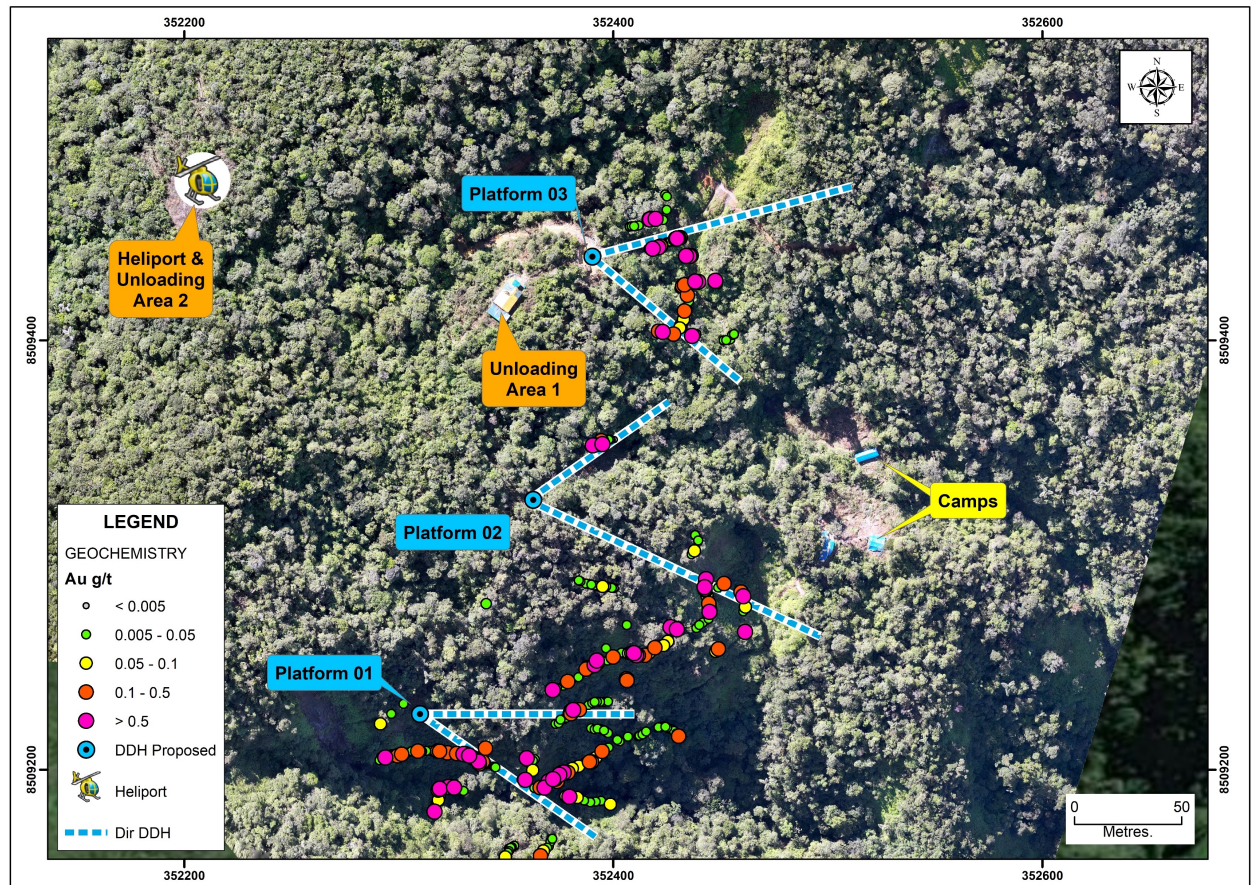
- Up to 20 diamond drill platforms permitted
- Drill Program planned to commence late October 2024



# GABAN – CORITIRI DRILL PROGRAM



- Permit for up to 20 diamond drill platforms
- Planned drill-program for late October 2024





# GABAN – CORITIRI DRILL PROGRAM



TSX-V:WINS

Platform 2



Platform 3

THANK-YOU



For further inquiries regarding Winshear's  
drill program please contact:

Patricio Varas

*pat.varas@winshear.com*

TSX-V:WINS