



# FOCUSED ON DISCOVERY

TSX-V: WINS | FRA:9HR0



# Forward Looking Statements

This presentation may contain forward looking statements which involve known and unknown risks, uncertainties and other factors which may cause the actual results, performance, or achievements to be materially different from any future results, performance or achievements expressed or implied by such forward-looking statements.

Forward looking statements may include statements regarding exploration results and budgets, resource estimates, work programs, strategic plans, market price of metals, or other statements that are not statements of fact.

Although the expectations reflected in such forward-looking statements are reasonable, there is no assurance that such expectations will prove to have been correct. Various factors that may affect future results include, but are not limited to: fluctuations in market prices of metals, foreign currency exchange fluctuations, risks relating to exploration, including resource estimation and costs and timing of commercial production, requirements for additional financing, political and regulatory risks. Accordingly, undue reliance should not be placed on forward looking statements.

All technical information on this website has been reviewed and approved for disclosure by Mr. J. Patricio Varas, P. Geo, Winshear's President and Qualified Person as designated by NI 43-101 Standards of Disclosure for Mineral Projects. Readers are further referred to the technical reports on the company's website and on SEDAR+ for more detailed information.



# Our Projects

## **PORTSOY Nickel – Copper – Cobalt Project – Aberdeenshire, Scotland**

- Option to earn a 100% interest from Peak Nickel Ltd
- Near surface, massive, semi-massive and disseminated sulphide mineralisation
- Multiple drill targets
- 24 drill holes completed in 2023 / 2024 confirm continuity along strike and to depth
- 2026 drill program completed, results pending

## **THUNDER BAY GOLD PROJECT – NW Ontario, Canada**

- Option to earn a 100% interest from Ontario prospector team
- Underexplored Archaean greenstone belt immediately NE of Thunder Bay
- Multiple km++ long targets identified through 2025 till and soil sampling program – Inflection, MacGregor, El Dorado, and Kingfisher
- 2026 soil sampling underway and airborne magnetics program to commence in June
- Current activity in the same belt advancing projects with large scale potential (+5 million ounce)

<b>Shares Issued</b>	69,251,965
<b>Warrants</b>	6,655,667 (at \$0.12) 12,959,000 (at \$0.20)
<b>Stock Options</b>	3,700,000 (at \$0.13) 2,000,000 (at \$0.15)
<b>Fully Diluted</b>	94,566,632
<b>Management &amp; Insiders</b>	XXXXXX



*Massive sulphide mineralisation from the Rodburn Target, Portsoy Project, Scotland*

# Portsoy Ni-Cu-Co Project – 250km<sup>2</sup>

- High-grade critical metals project in Scotland - good jurisdiction, excellent infrastructure
- Discovered early 1970s by Rio / Goldfields JV – no work for 50 years
- Massive, semi-massive, and disseminated sulphide mineralisation – open along strike and to depth.
- 24 drillholes completed in 2023 / 2024 demonstrate open-pittable and underground potential
- Access agreements plus exploration and mining lease agreements secured
- Numerous multi-Km magnetic / geochemical anomalies not yet drill-tested

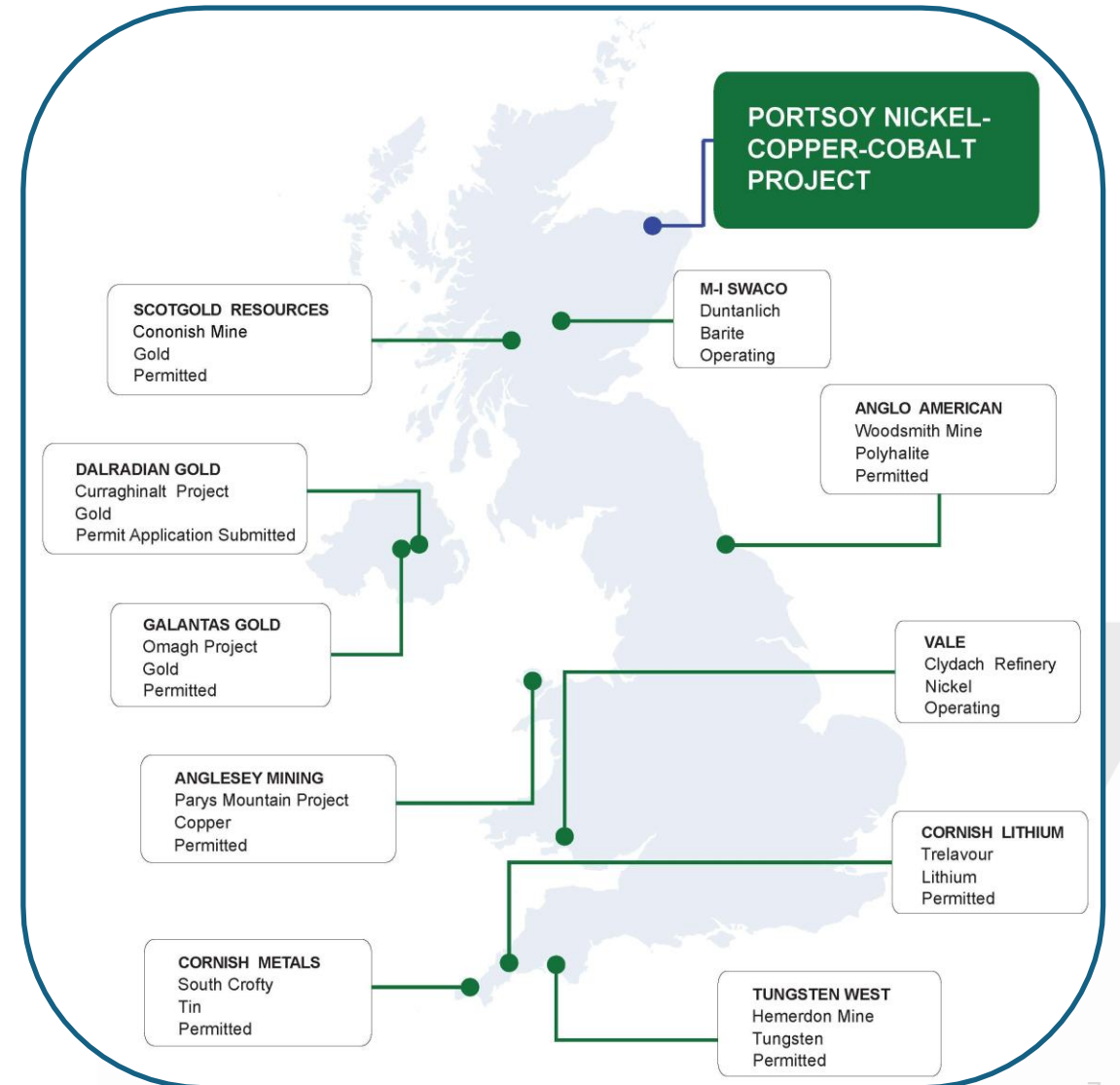
# Portsoy Project



- Inverness to Aberdeen railway runs through the project area
- Main road within 5 miles of the Rodburn target
- One hour drive from Aberdeen Airport
- Easy access to nickel smelters in Scandinavia

# Portsoy Project – Key Points

- Mining projects get permitted in the UK, e.g. Woodsmith (polyhalite), Hemerdon (tungsten-tin), South Crofty (tin), and Cononish (gold)
- 250km<sup>2</sup> exploration licence over numerous regional targets
- 100-year mining rights on the farms hosting the Rodburn target and strike extents
- Safeguarded Mineral Resource – local planning policy does not generally allow any other form of development other than mining
- Area of Search for Minerals – Rodburn target area and strike extents - mineral potential of the areas should not be sterilized by inappropriate development



# Rodburn Target - 2023/2024 Drill Program

Hole ID	From (m)	Length (m)	Ni (%)	Cu (%)	Co (ppm)	% NiEq
<b>RBD001</b>	40.52	12.48	0.63	0.54	403	0.97
incl.	45.00	<b>6.00</b>	<b>0.96</b>	<b>0.73</b>	<b>601</b>	<b>1.42</b>
<b>RBD002</b>	50.60	35.40	0.71	0.30	473	0.93
incl.	70.00	<b>12.00</b>	<b>1.42</b>	<b>0.54</b>	<b>929</b>	<b>1.82</b>
<b>RBD003</b>	103.94	14.06	0.34	0.40	242	0.58
incl.	114.00	4.00	0.69	0.66	484	1.10
<b>RBD004</b>	112.00	<b>12.26</b>	<b>1.02</b>	<b>0.83</b>	<b>633</b>	<b>1.54</b>
incl.	118.29	<b>5.97</b>	<b>1.92</b>	<b>1.50</b>	<b>1197</b>	<b>2.86</b>
<b>RBD008</b>	186.00	2.00	0.92	0.27	535	1.13
<b>RBD009</b>	51.60	<b>13.79</b>	<b>1.39</b>	<b>0.53</b>	<b>785</b>	<b>1.76</b>
incl.	60.00	<b>5.39</b>	<b>2.04</b>	<b>0.56</b>	<b>1110</b>	<b>2.46</b>
<b>RBD013</b>	33.00	<b>1.00</b>	<b>1.14</b>	<b>0.60</b>	<b>450</b>	<b>1.51</b>
<b>RBD015</b>	36.00	33.00	0.45	0.16	237	0.56
<b>RBD016</b>	30.00	<b>59.00</b>	<b>0.32</b>	<b>0.19</b>	<b>291</b>	<b>0.45</b>
incl.	74.00	<b>9.00</b>	<b>1.13</b>	<b>0.73</b>	<b>1056</b>	<b>1.65</b>
<b>RBD018</b>	100.00	<b>2.00</b>	<b>1.54</b>	<b>0.93</b>	<b>815</b>	<b>2.13</b>
<b>RBD024</b>	159.00	10.60	0.50	0.34	278	0.71
incl.	167.00	2.60	0.77	0.16	394	0.90

NiEq (% nickel equivalent) based on US\$19,000/t Ni, US\$9,000/t Cu, US\$32,000/t Co, using the formula  $Ni\% + (0.524 \times Cu\%) + (1.22 \times 10^{-4} \times Co \text{ ppm})$ .

Equal Recovery Assumed.

# Rodburn Target

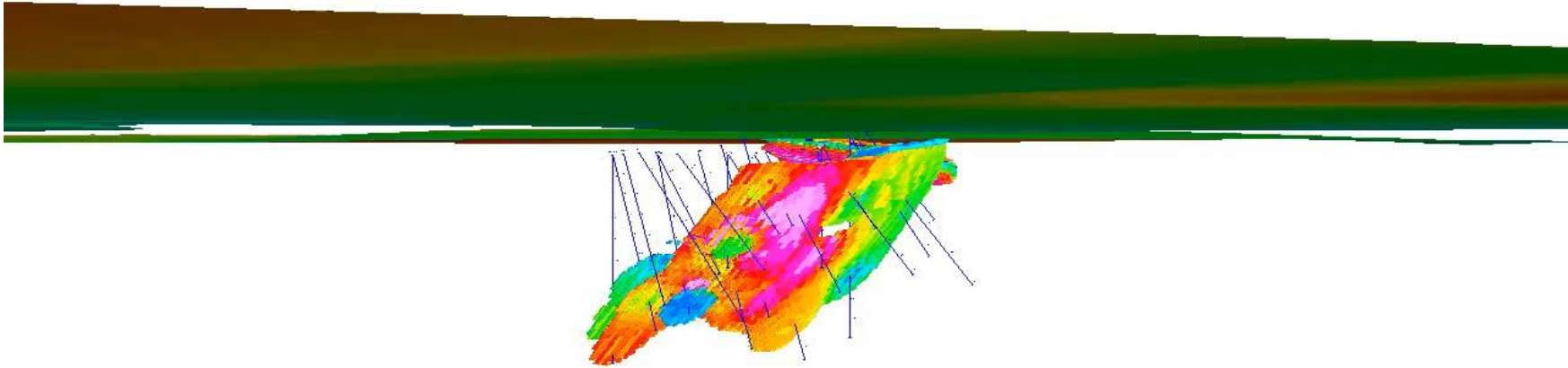
RBD002: 12.0m @ 1.42% Ni, 0.54% Cu, 0.09%  
Co (1.82% NiEq) from 70.0m



RBD009: 13.8m @ 1.76% NiEq from 51.6m incl.  
5.4m @ 2.04% Ni, 0.56% Cu,  
0.10% Co (2.46% NiEq) from 60m

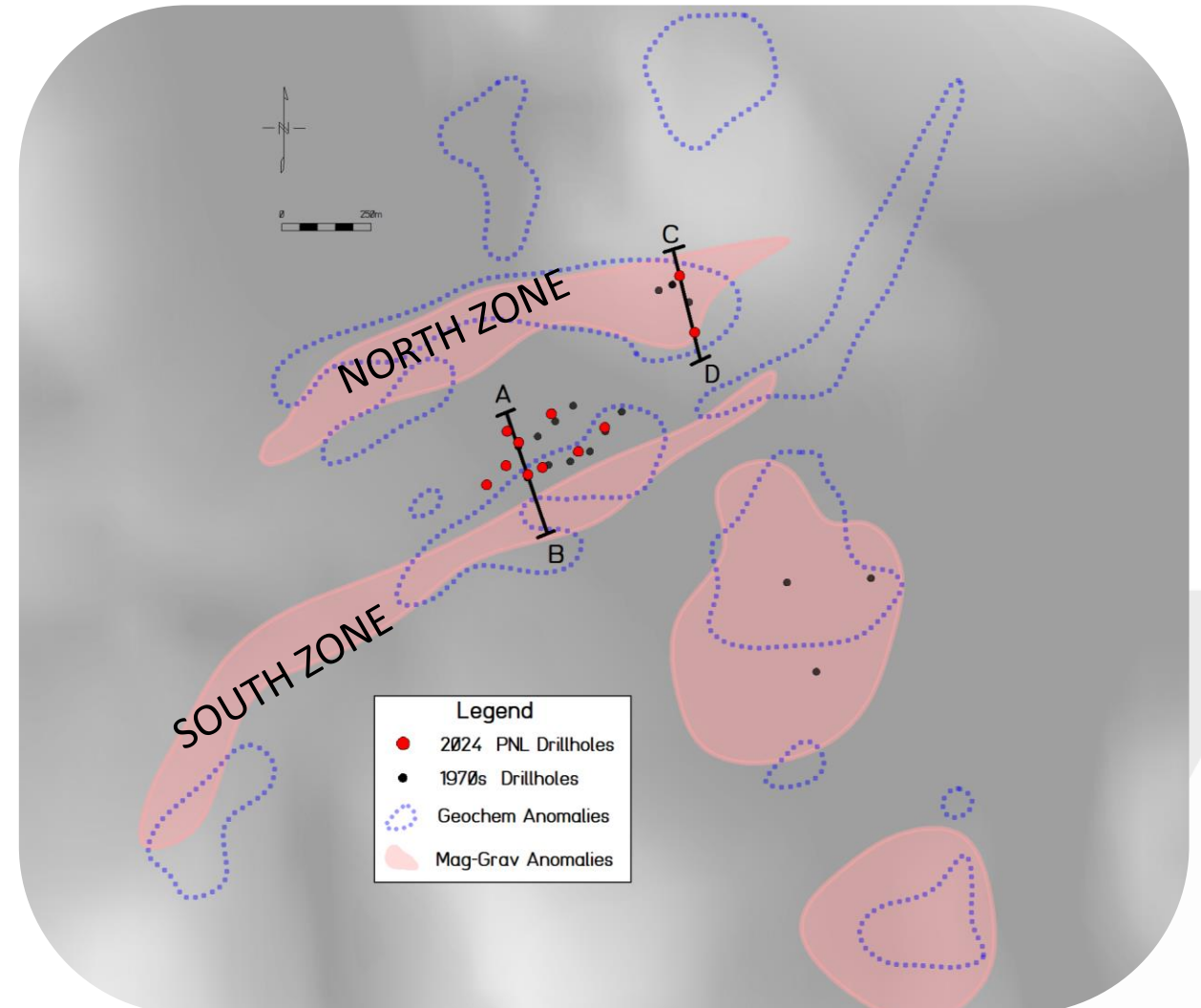


# Rodburn Target

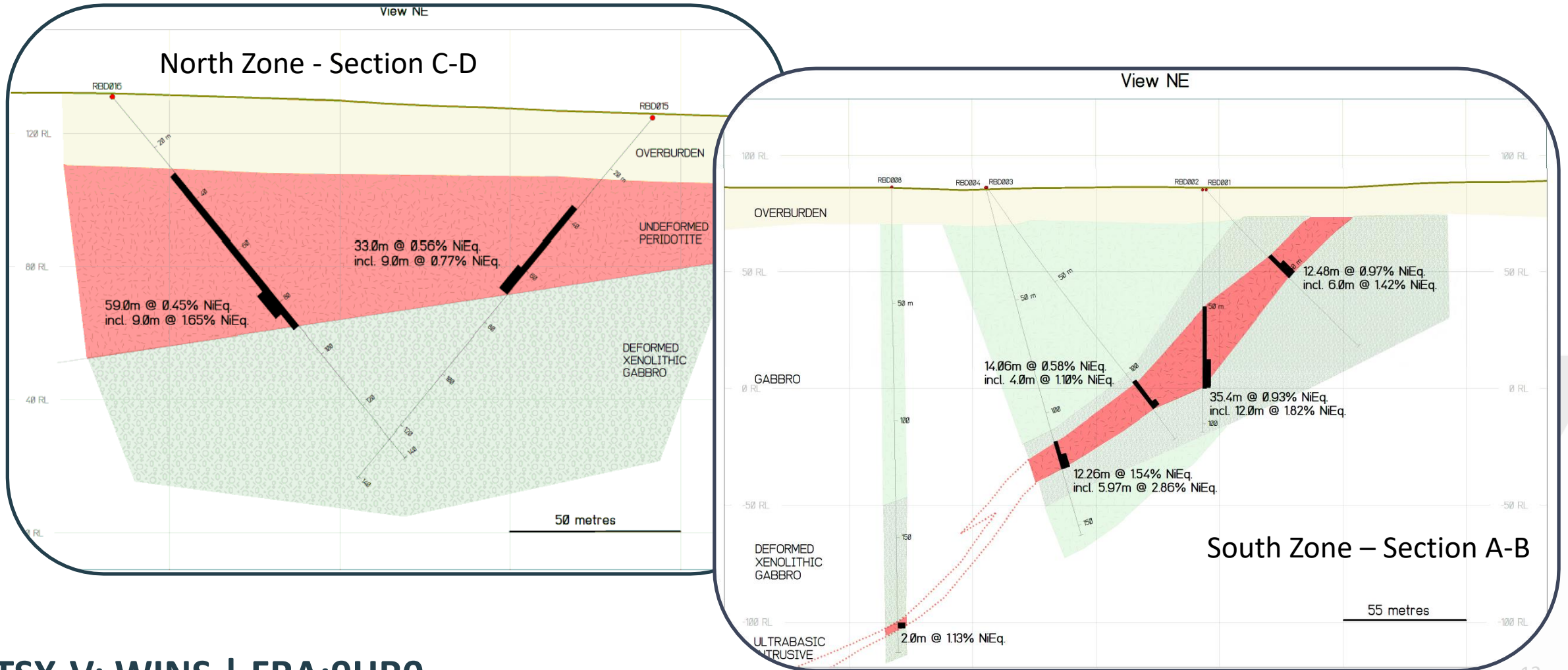


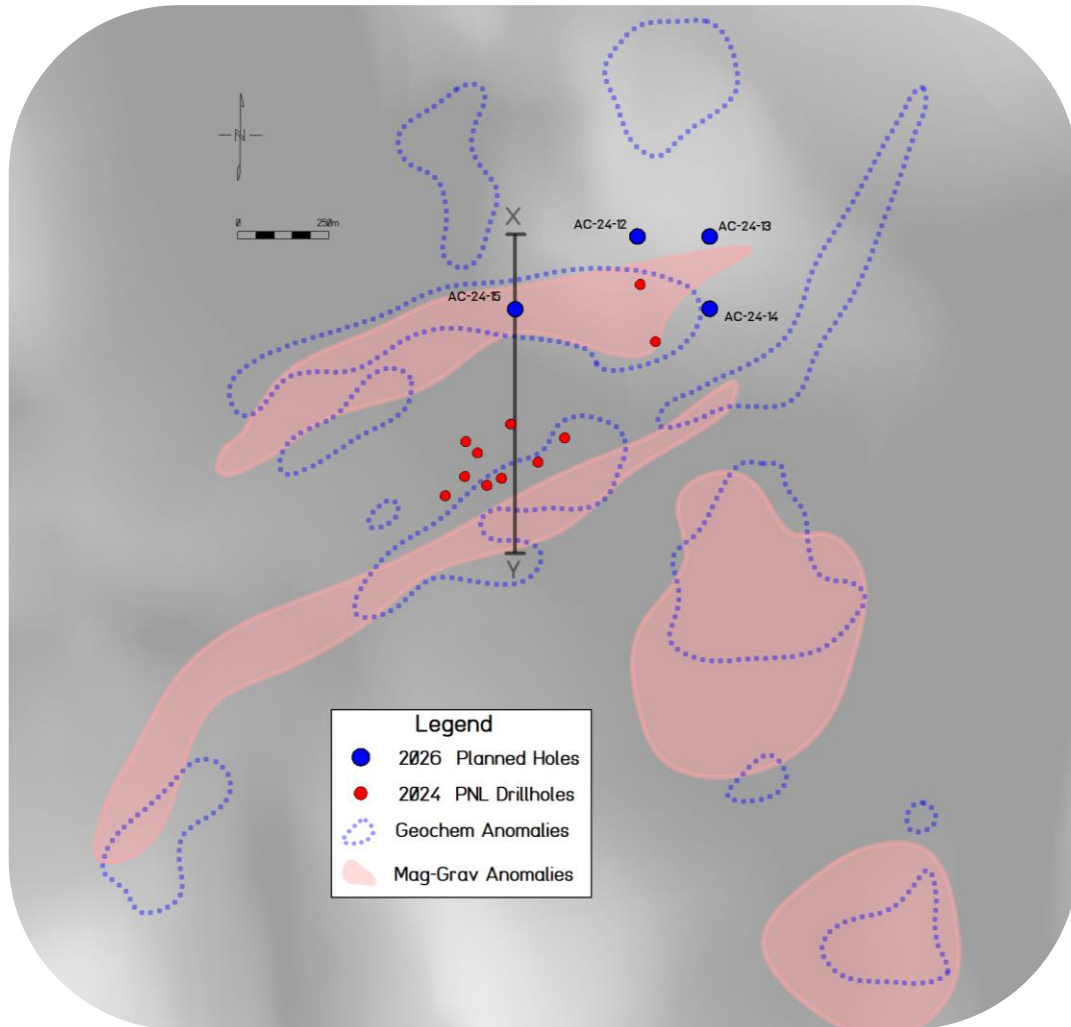
# Rodburn Target

- Two mineralised zones drilled to date (the South and North Zones)
- Geologically similar & 600m apart
- Both zones wide open
- More drilling needed to test true strike & down-dip potential
- Geochemical & geophysical signatures indicate structures are over 3km long
- Numerous other large targets within 2km

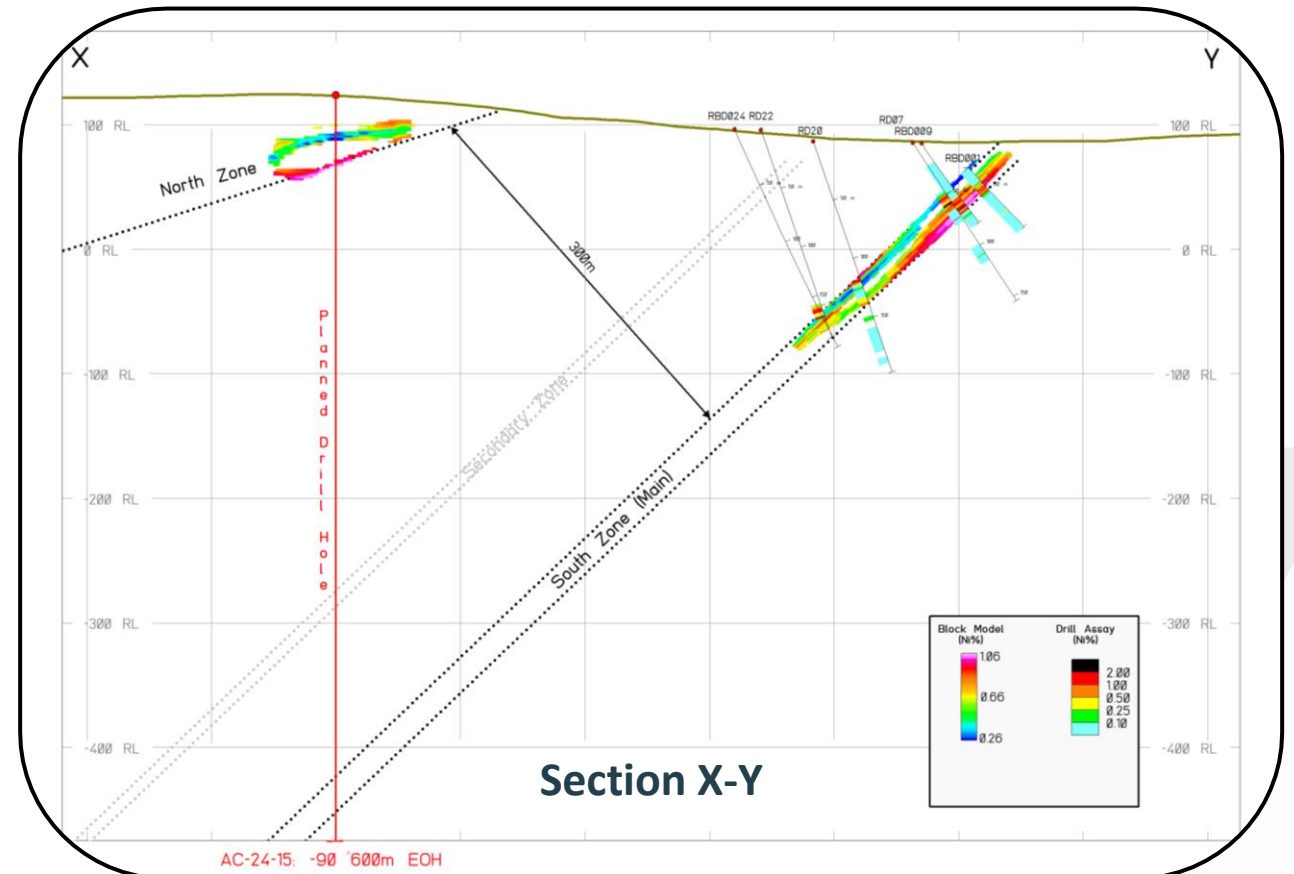


# Rodburn Target





## 2026 planned drilling

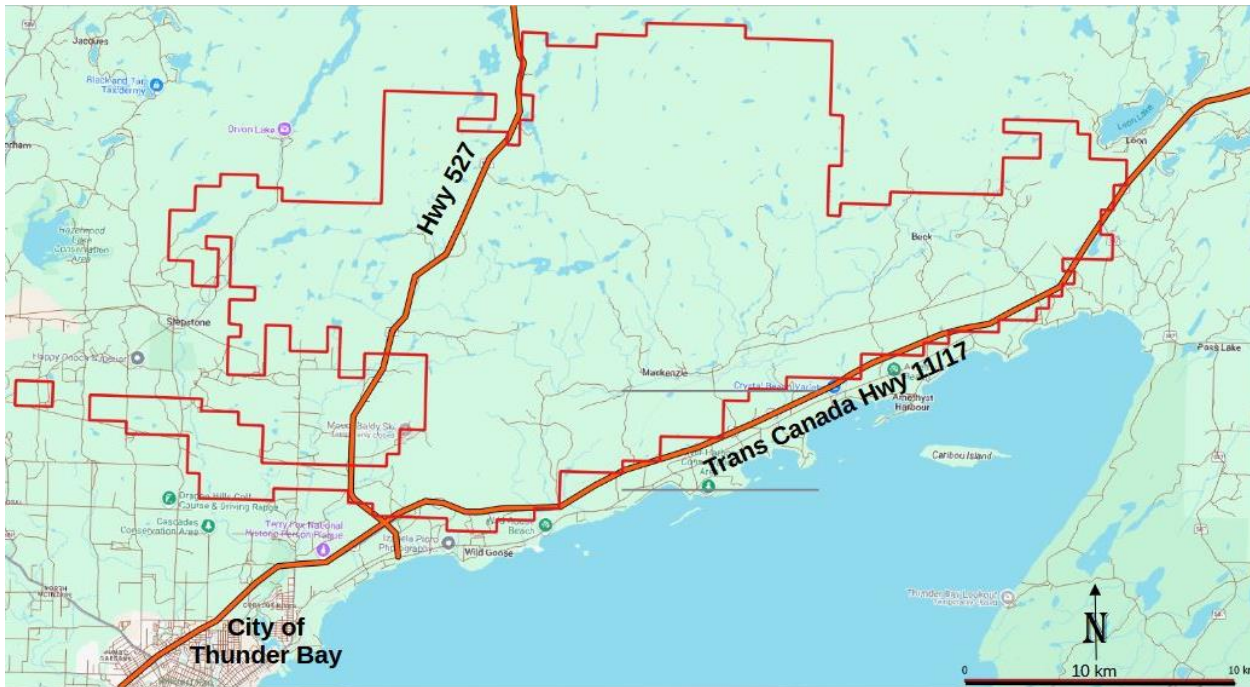


# Portsoy Project Summary

- Geochem anomalies indicate district-scale potential for Ni-Cu-Co mineralisation
- Rodburn is the most advanced / highest grade Ni-Cu-Co target in the UK
- Drilling indicates potential for a large near-surface Ni-Cu-Co resource
- Exploration and mineral rights secured – 100-year mining rights, subject to planning
- Multiple other geochemical / geophysical targets to test outside of Rodburn



# Thunder Bay Gold Project



- Eastern extension of the Archaean Shebandowan Greenstone Belt
- Very little historic exploration
- Excellent infrastructure
- Potential for orogenic gold, volcanogenic massive sulphide, and Ni-Cu-Co-PGE deposits

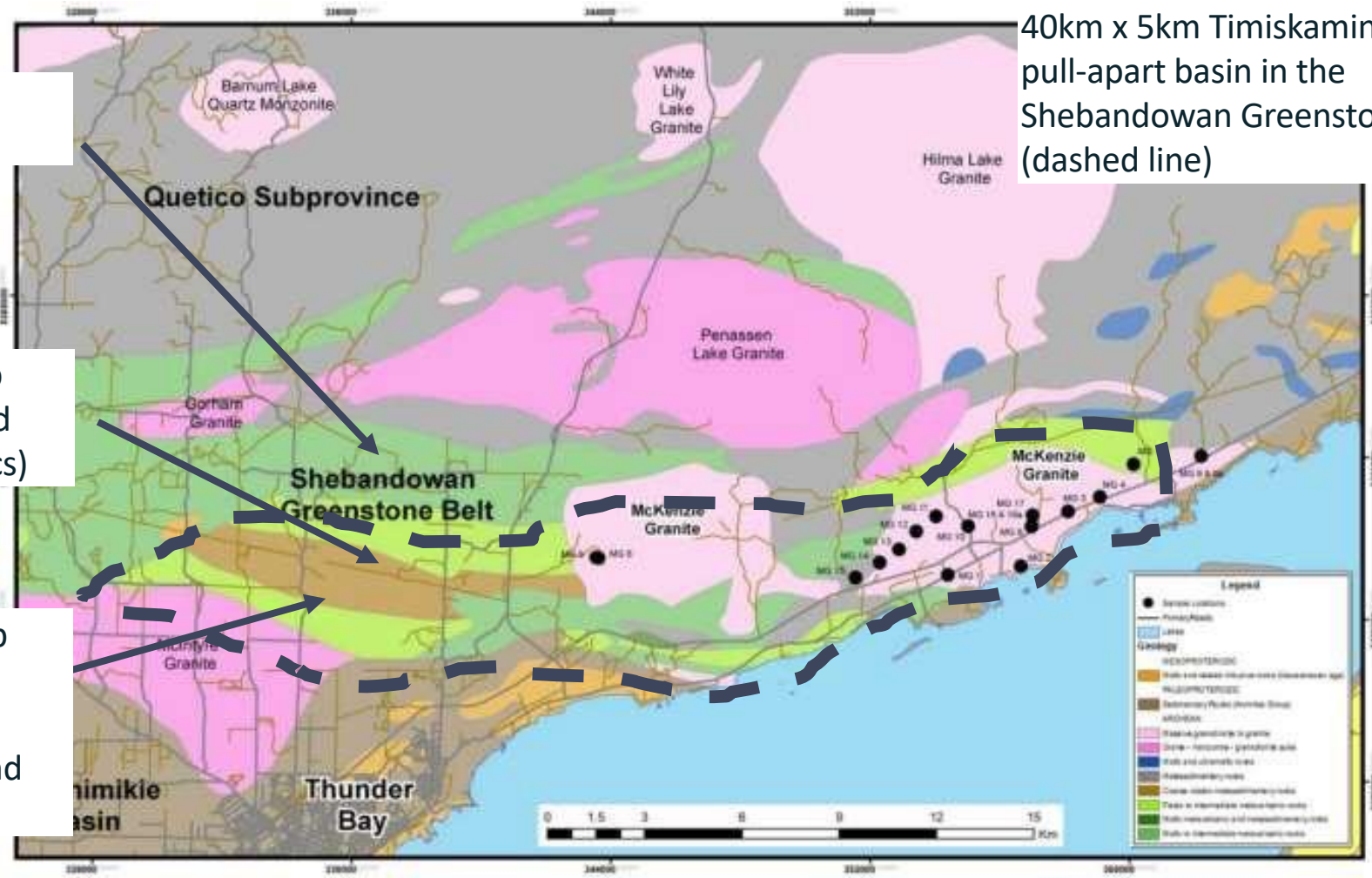
# Thunder Bay Gold Project - Geology

Older Greenwater Assemblage

Kashabowie Group  
2690Ma (Felsic and Komatiitic Volcanics)

Shebandowan Group  
2670-2680Ma  
(Coarse Sediments, Alkaline Volcanics and Felsic Intrusions)

40km x 5km Timiskaming-like pull-apart basin in the Shebandowan Greenstone Belt (dashed line)



# Thunder Bay Gold Project - Location

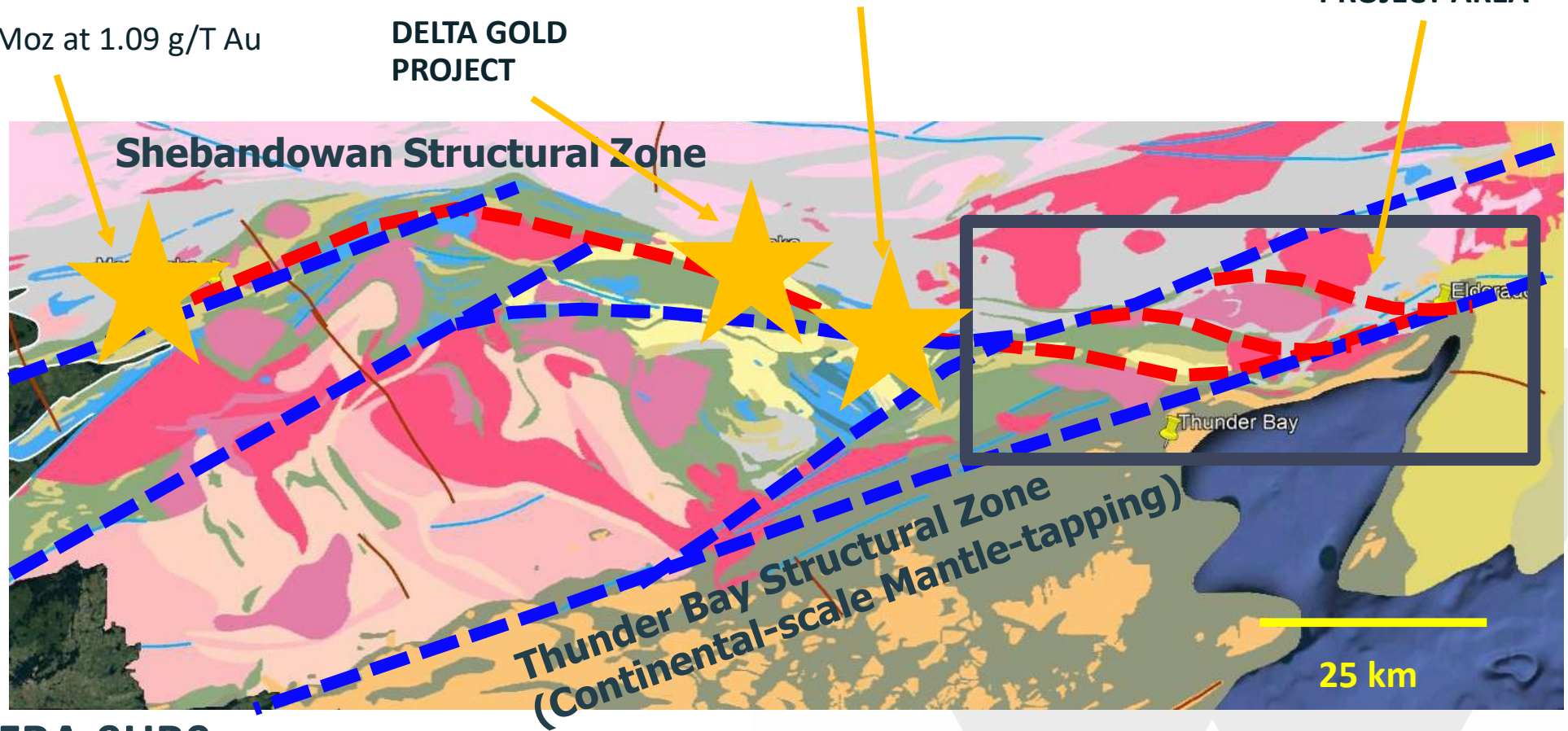
## GOLD X2 MINING - MOSS DEPOSIT

- Ind. Resource – 1.23 Moz at 1.22 g/T Au
- Inf. Resource – 4.92 Moz at 1.09 g/T Au

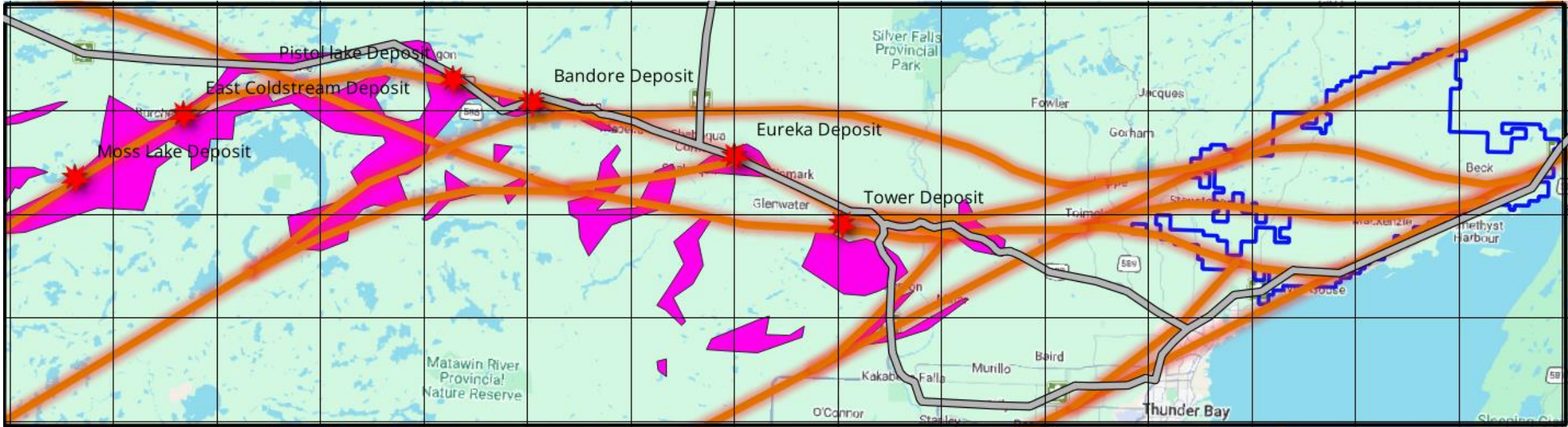
## THUNDER GOLD – TOWER MT

- Ind. Resource – 0.51 Moz at 0.46 g/T Au
- Inf. Resource – 3.05 Moz at 0.45 g/T Au

## THUNDER BAY GOLD PROJECT AREA

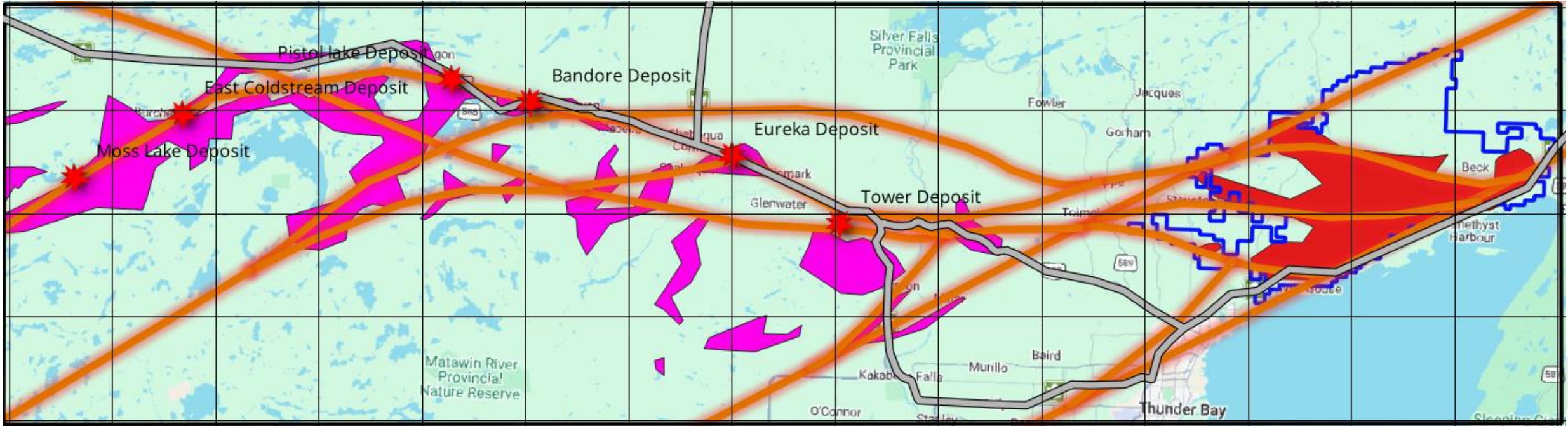


# The Shebandowan Belt



- OGS Au in till survey > 5ppb
- Thunder Bay Project not covered

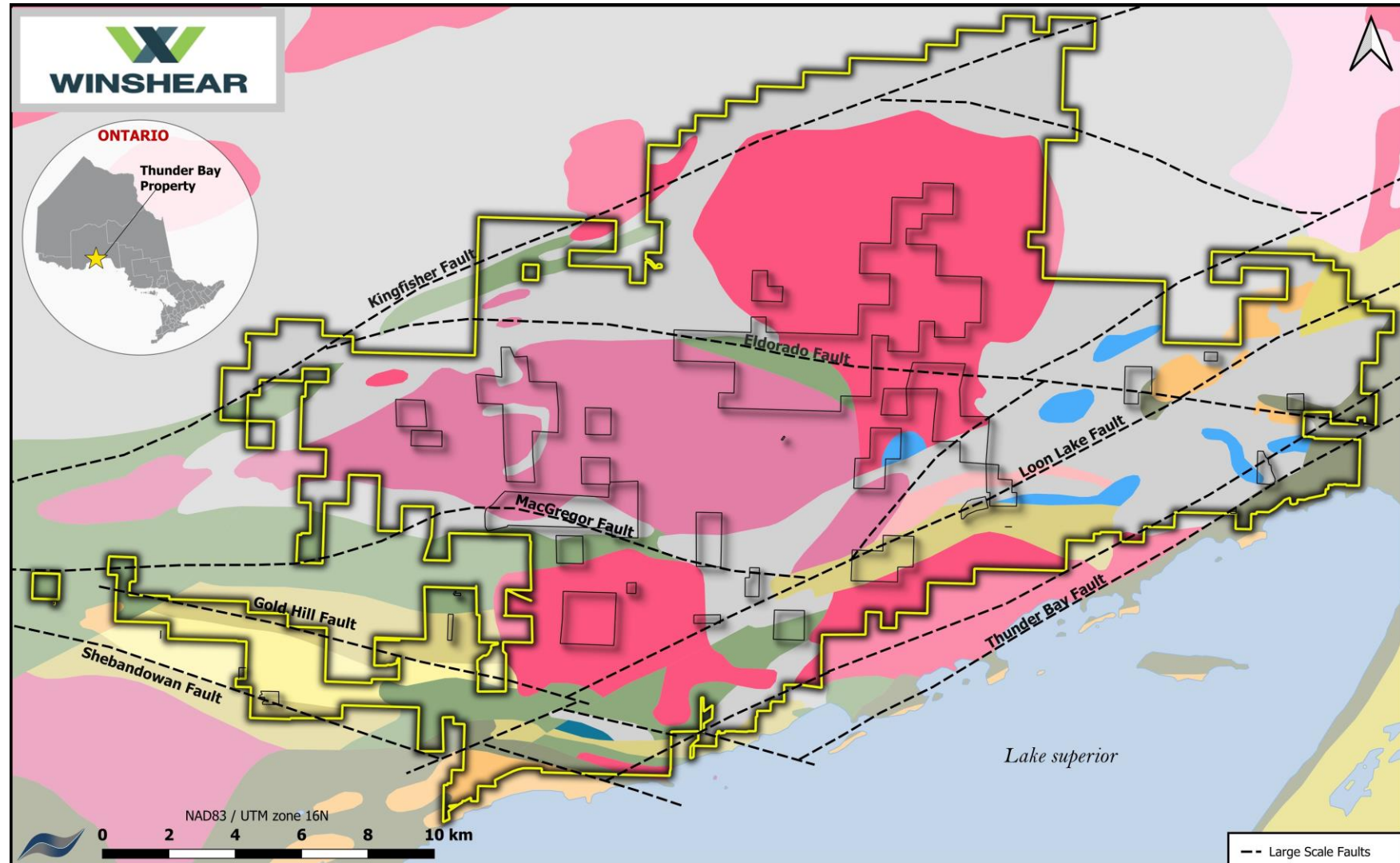
# The Shebandowan Belt



- Winshear Au in till survey > 5ppb
- Possibly the largest anomaly in the belt

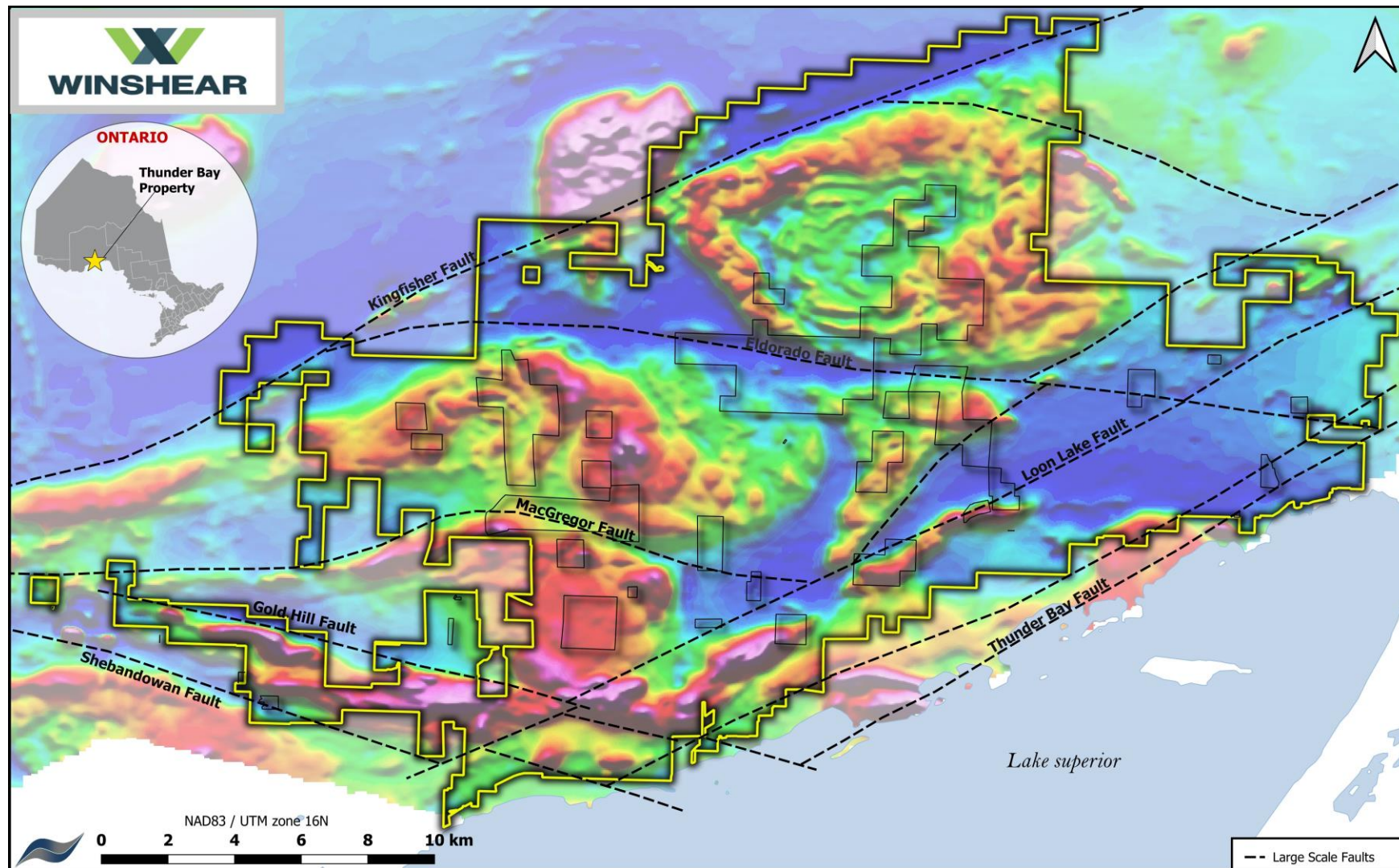
# TBGP - Geology

- Eastern extension of the Archaean Shebandowan Greenstone Belt
- Timiskaming age intrusives
- Volcano-sedimentary basins, iron formation, komatiitic volcanics
- Potential for orogenic gold, volcanogenic massive sulphides, and Ni-Cu-Co-PGE deposits



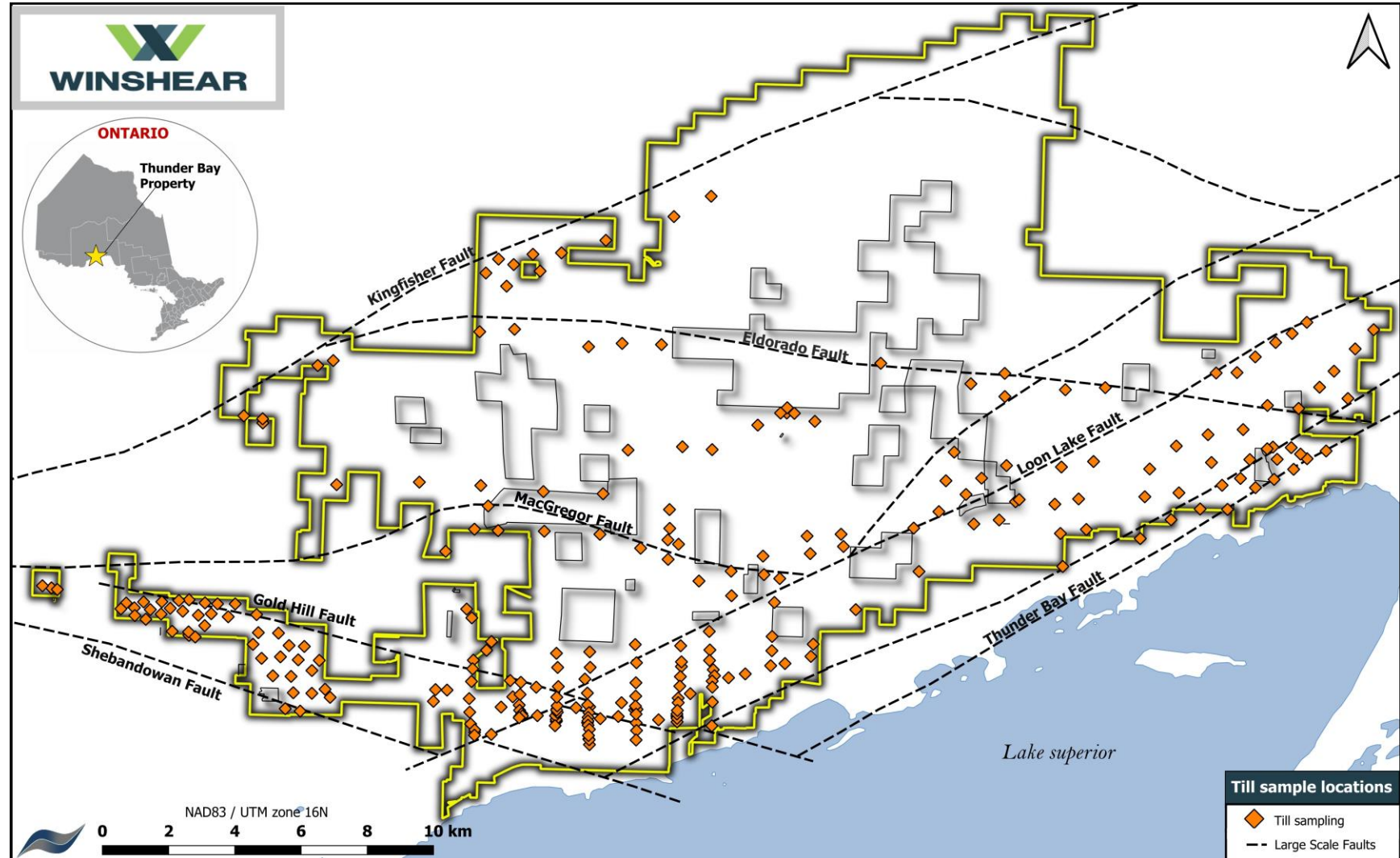
# TBGP - Magnetics

- Large-scale bounding structures
- Bridging structures
- Lithology contrasts
- Deformation / rotation
- Magnetite destruction / alteration?



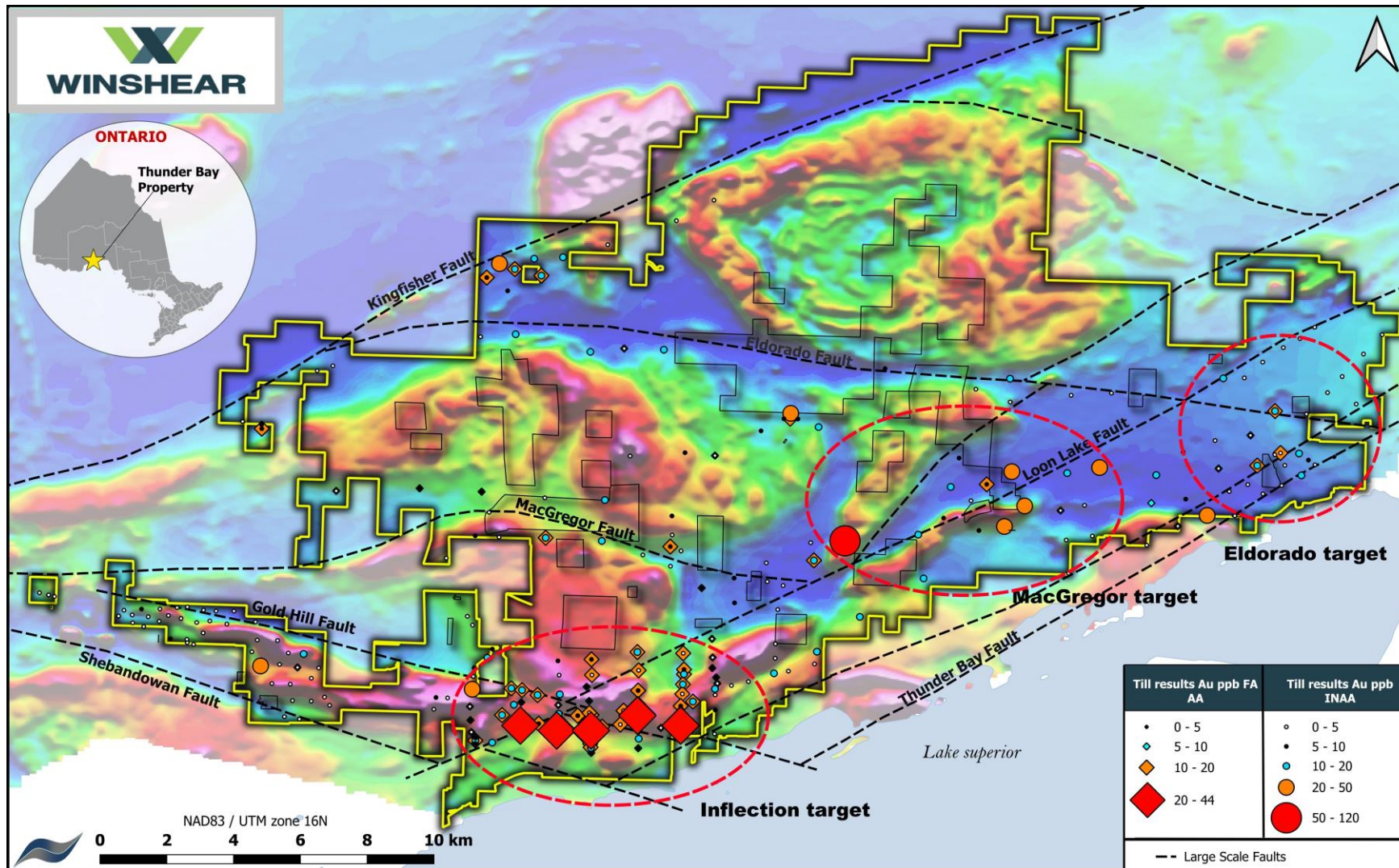
# TBGP – 2025 Till Sampling

- Phase 1 - 272 till samples
- Designed to target down ice of major structures
- Initial focus on areas with easiest access – the Trans Canada Highway
- Fladgate Exploration contracted to conduct the work



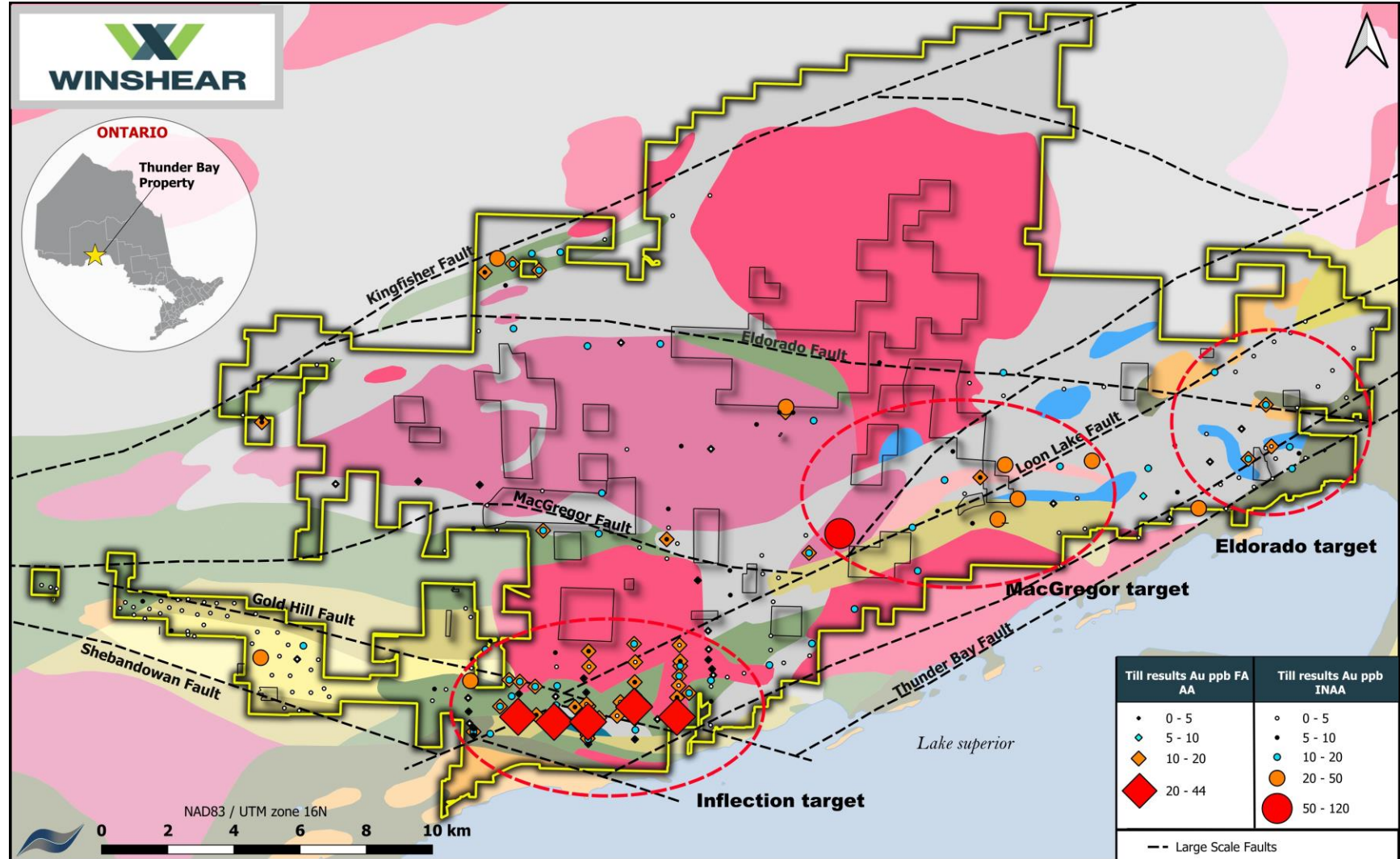
# TBGP – Gold in till results FA-AA + INAA

- 6km long Inflection Target
- El Dorado Target – more discrete, but good location
- MacGregor footprint is 10km long and potentially linked to El Dorado
- Kingfisher Fault area
- Individual anomalies of interest in the central part of the project area



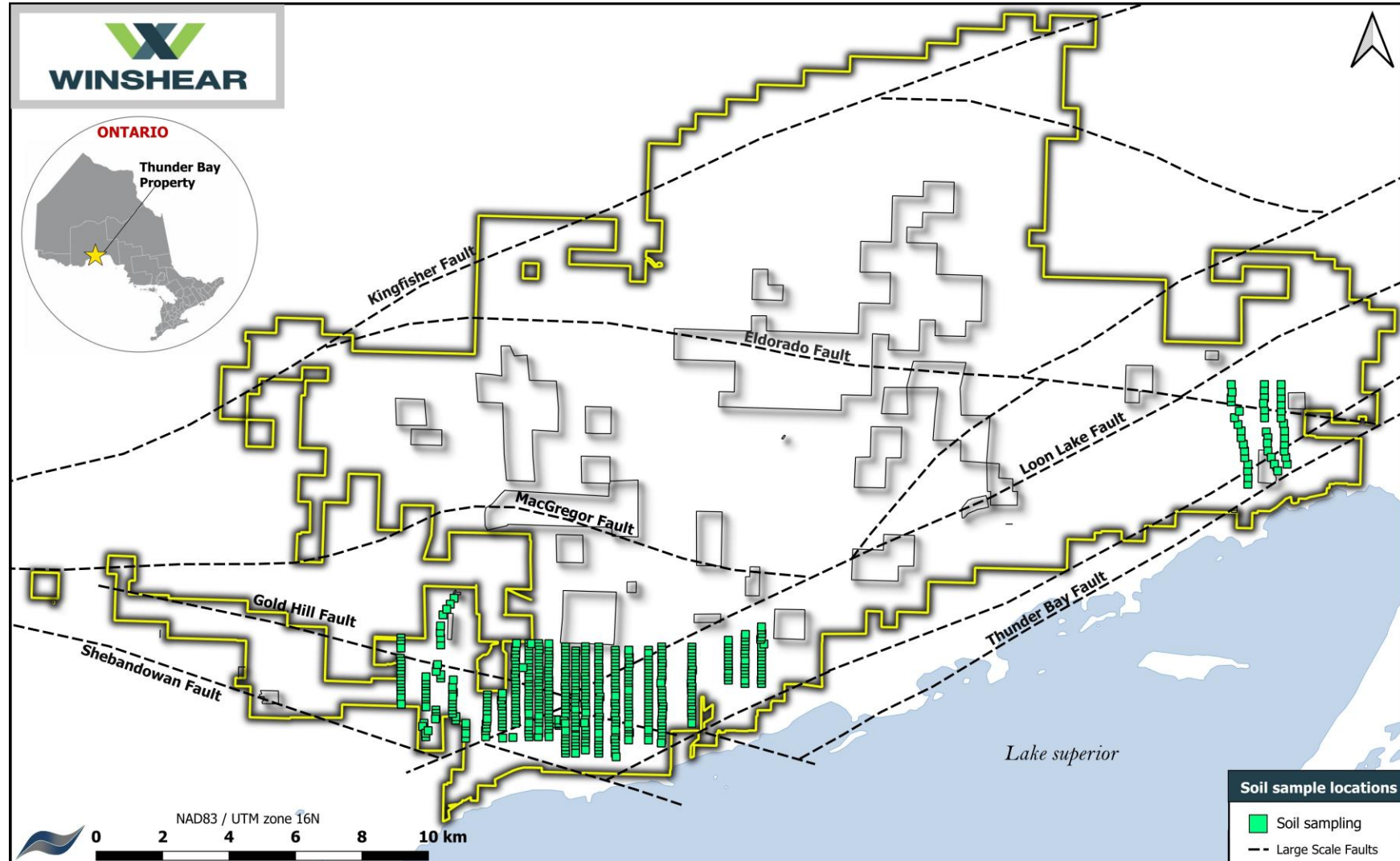
# TBGP – Gold in till results FA-AA + INAA

- Inflection – major structural junction and change of geology, wrapping around granite
- MacGregor – multiple structures, complex geology, extensive cover, mafic / ultramafic rocks
- El Dorado – structural intersection, extensive cover, historic assays up to 30g/t Au adjacent to TransCanada Highway



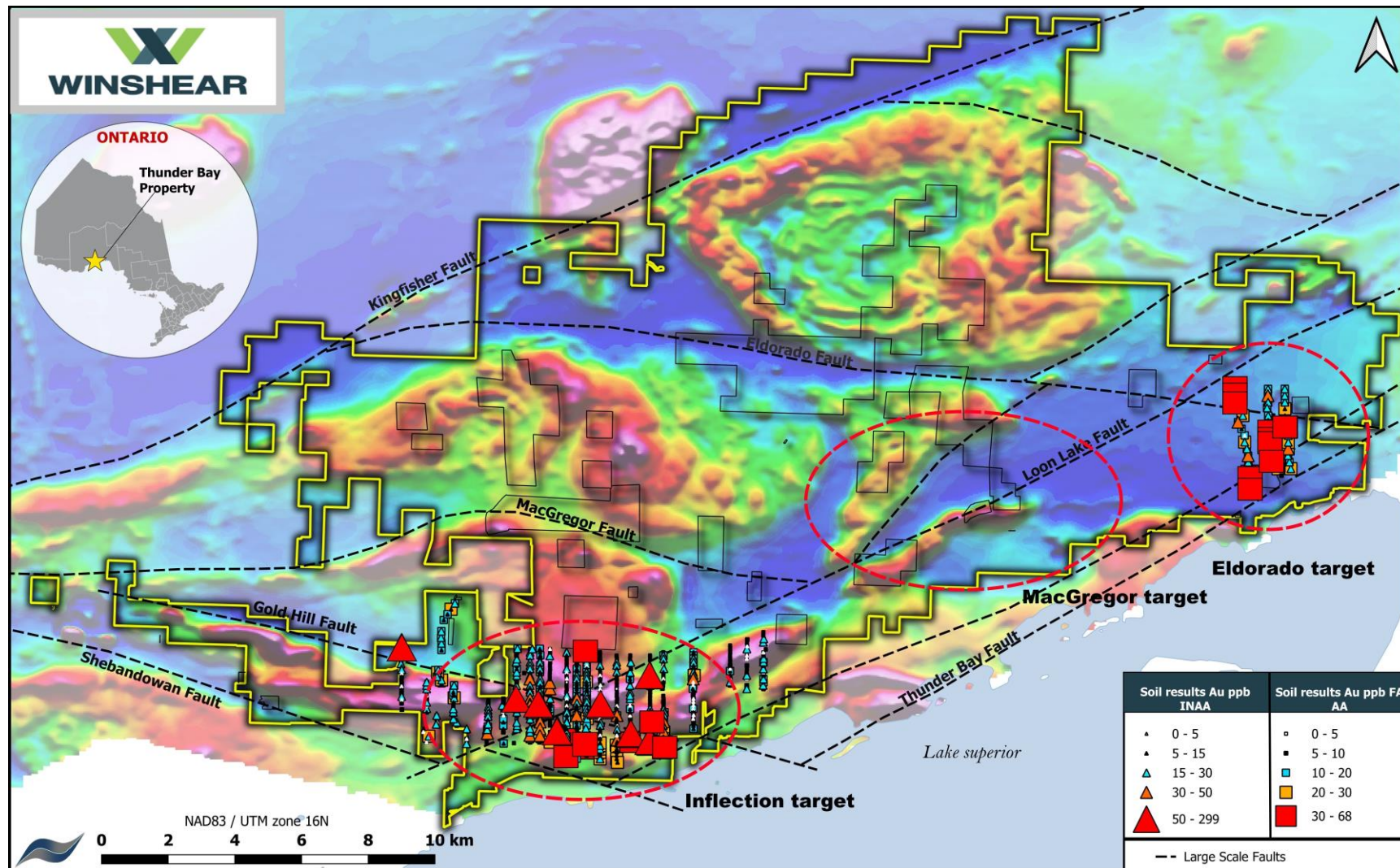
# TBGP – Soil Sample Coverage

- Q3 / Q4 – 2025
- 565 soil samples
- Focus on the Inflection and El Dorado targets
- Fladgate Exploration conducted the work



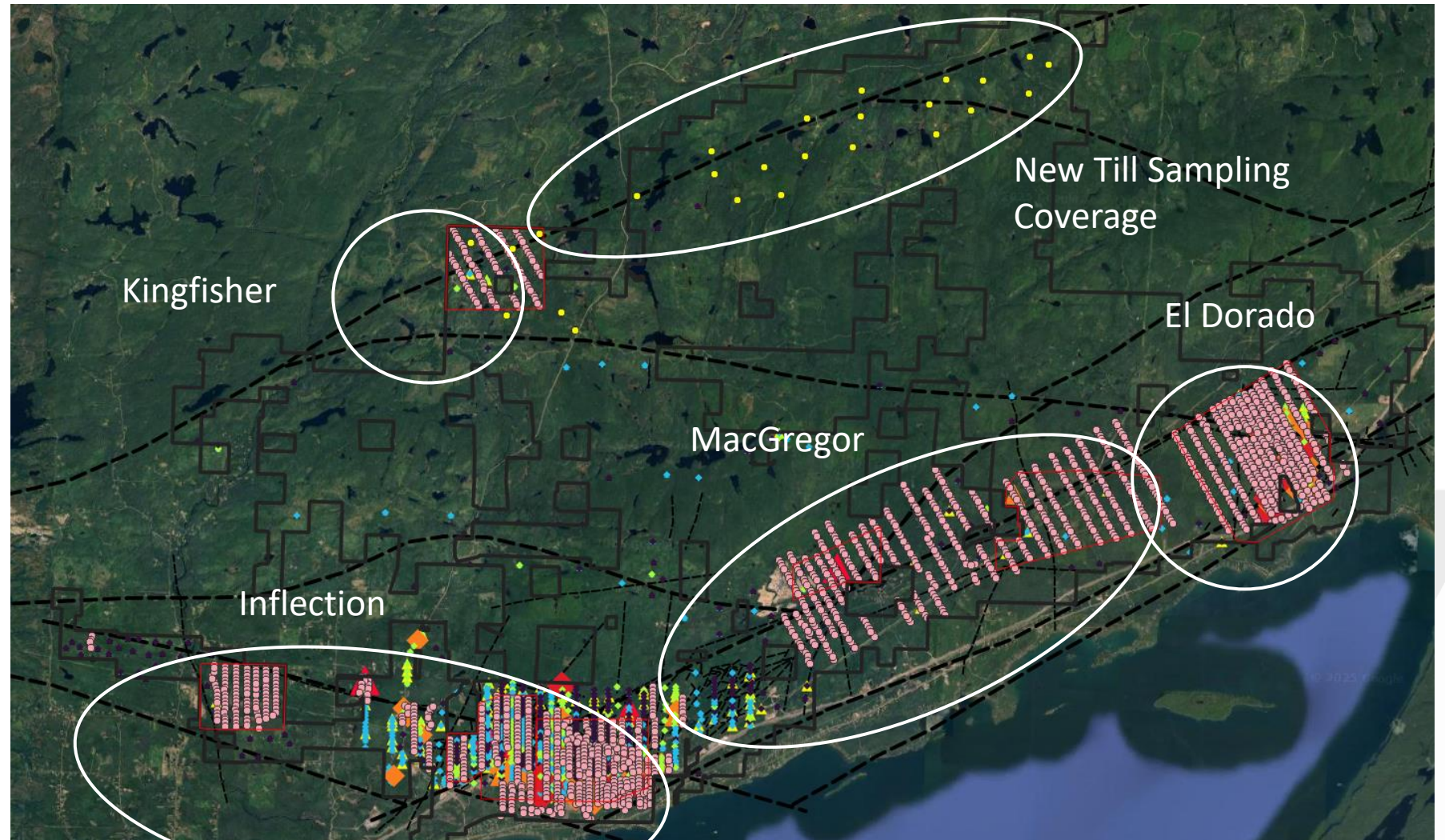
# TBGP – Gold in soil results FA-AA + INAA

- Inflection Target – 5km+ gold in soil anomaly
- Best results in area of subdued magnetic response where the geology swings around the granite
- El Dorado - 4km+ gold in soil anomaly, open in all directions



# Thunder Bay 2026 Programme Underway

- Soil sampling  
Inflection /  
MacGregor / El  
Dorado and  
Kingfisher Targets
- Till sampling along  
NE extension of  
Kingfisher Target  
along the Kingfisher  
Fault
- Drone magnetics  
over Inflection and  
El Dorado Targets





# Board and Management

**Stephen Leahy - Chairman**

Former CEO & Chairman of North American Tungsten, Director of Oroco Resource Corp

**Richard Williams - CEO & Director**

Co-Founder of Winshear, former CEO & Director of Cornish Metals

**Patricio Varas - President & Director**

Former CEO of Western Potash, and executive management with Far West Mining (Santo Domingo Sur). Also involved in discovery of Diavik Diamond Mine

**Mark Sander - Director**

Former VP Strategy and Planning for BHP Copper. Founding Partner of Plinian Capital

**Andrew MacRitchie - Director**

CFO of Skeena Resources Limited

**Danièle Spethmann - Director**

Former CEO of Warrior Gold

**Krysta Chapman - CFO**

CFO of Ideon Technologies; Former Treasurer of Sandstorm Gold



# THANK YOU

for further inquiries please contact:

Richard Williams

[richard@winshear.com](mailto:richard@winshear.com)  
[winshear.com](http://winshear.com)

TSX-V: WINS | FRA:9HR0

