

**FOCUSED ON DISCOVERY**

## **FORWARD LOOKING STATEMENTS**

This presentation may contain forward looking statements which involve known and unknown risks, uncertainties and other factors which may cause the actual results, performance, or achievements to be materially different from any future results, performance or achievements expressed or implied by such forward-looking statements.

Forward looking statements may include statements regarding exploration results and budgets, resource estimates, work programs, strategic plans, market price of metals, or other statements that are not statements of fact.

Although the expectations reflected in such forward-looking statements are reasonable, there is no assurance that such expectations will prove to have been correct. Various factors that may affect future results include, but are not limited to: fluctuations in market prices of metals, foreign currency exchange fluctuations, risks relating to exploration, including resource estimation and costs and timing of commercial production, requirements for additional financing, political and regulatory risks. Accordingly, undue reliance should not be placed on forward looking statements.

All technical information on this website has been reviewed and approved for disclosure by Mr. J. Patricio Varas, P. Geo, Winshear's President and Qualified Person as designated by NI 43-101 Standards of Disclosure for Mineral Projects. Readers are further referred to the technical reports on the company's website and on SEDAR for more detailed information.

## OUR PROJECTS

### **PORTSOY Nickel – Copper – Cobalt Project – Aberdeenshire, Scotland**

- Option to earn a 100% interest from Peak Nickel Ltd
- Near surface, massive sulphide mineralisation
- Multiple drill targets
- 24 drill holes completed in 2023 / 2024 confirm continuity along strike and to depth
- Drilling planned for Q1 2026 to demonstrate 10-20Mt resource potential

### **THUNDER BAY GOLD PROJECT – NW Ontario, Canada**

- Option to earn a 100% interest from Ontario prospector team
- Underexplored Archaean greenstone belt immediately NE of Thunder Bay
- 6km long Inflection Target identified in 2025
- Numerous other gold-in-till anomalies for follow up
- Current activity in the same belt advancing projects with large scale (+5 million ounce) targets

## CORPORATE STRUCTURE

Shares Issued	44,251,965
Warrants	6,655,667 (at \$0.12)
Stock Options	3,700,000 (at \$0.13)
Fully Diluted	54,607,334



*Massive sulphide mineralisation from the  
Rodburn Target, Portsoy Project, Scotland*



## PORTSOY Ni-Cu-Co PROJECT – 250km<sup>2</sup>

- High-grade critical metals project in Scotland - good jurisdiction, excellent infrastructure
- Discovered early 1970s by Rio / Goldfields JV – no work for 50 years
- Massive and semi-massive sulphide mineralisation – open in all directions.
- 24 drillholes completed in 2023 / 2024 demonstrate open-pittable and underground potential
- Access agreements plus exploration and mining lease agreements secured
- Multiple multi-Km magnetic / geochemical anomalies not yet drill-tested

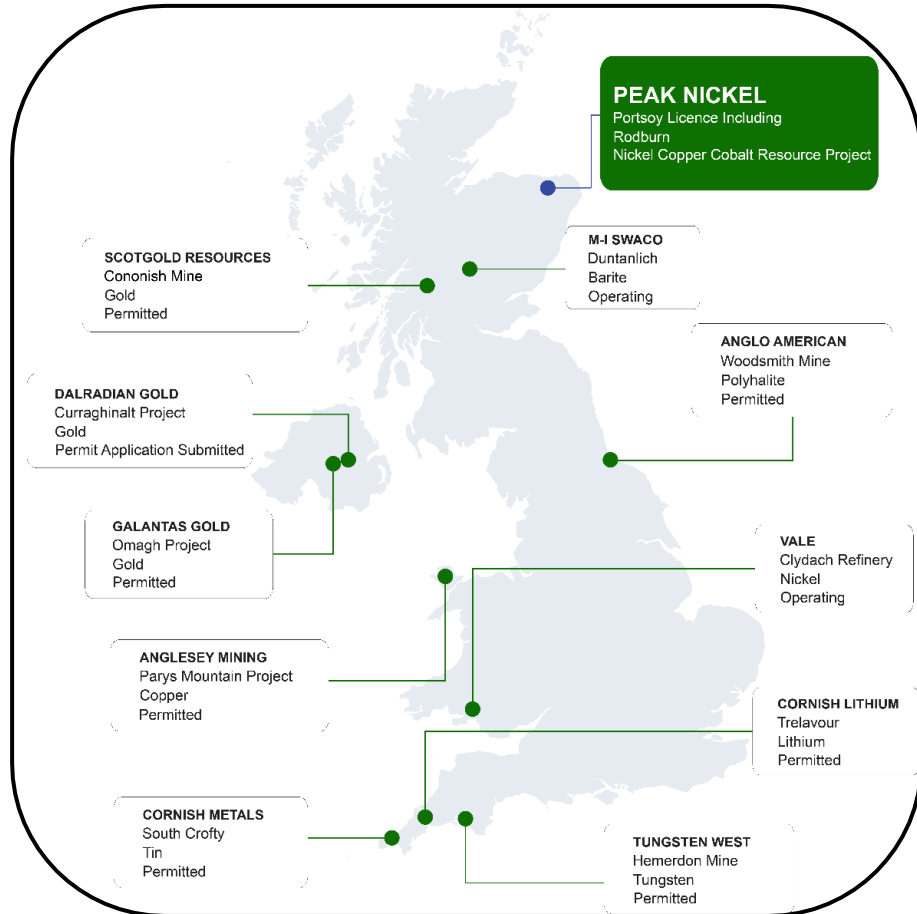


**Drilling planned for Q1 2026**

## PORTSOY PROJECT

- Inverness to Aberdeen railway runs through the project area
- Main road within 5 miles of the Rodburn target
- One hour drive from Aberdeen Airport
- Easy access to nickel smelters in Scandinavia





## PORTSOY PROJECTS - KEY POINTS

- Mining projects get permitted in the UK, e.g. Woodsmith (polyhalite), Hemerdon (tungsten-tin), South Crofty (tin), and Cononish (gold).
- 250km<sup>2</sup> exploration licence over numerous regional targets
- 100-year mining rights on the farms hosting the Rodburn target and strike extents.
- Safeguarded Mineral Resource – local planning policy does not generally allow any other form of development other than mining
- Area of Search for Minerals – Rodburn target area and strike extents - mineral potential of the areas should not be sterilized by inappropriate development

## Highlights from the 2023 / 2024 drill programme – Rodburn Target

Hole ID	From (m)	Length (m)	Ni (%)	Cu (%)	Co (ppm)	% NiEq
<b>RBD001</b>	40.52	12.48	0.63	0.54	403	0.97
incl.	45.00	6.00	0.96	0.73	601	1.42
<b>RBD002</b>	50.60	35.40	0.71	0.30	473	0.93
incl.	70.00	12.00	1.42	0.54	929	1.82
<b>RBD003</b>	103.94	14.06	0.34	0.40	242	0.58
incl.	114.00	4.00	0.69	0.66	484	1.10
<b>RBD004</b>	112.00	12.26	1.02	0.83	633	1.54
incl.	118.29	5.97	1.92	1.50	1197	2.86
<b>RBD008</b>	186.00	2.00	0.92	0.27	535	1.13
<b>RBD009</b>	51.60	13.79	1.39	0.53	785	1.76
incl.	60.00	5.39	2.04	0.56	1110	2.46
<b>RBD013</b>	33.00	1.00	1.14	0.60	450	1.51
<b>RBD015</b>	36.00	33.00	0.45	0.16	237	0.56
<b>RBD016</b>	30.00	59.00	0.32	0.19	291	0.45
incl.	74.00	9.00	1.13	0.73	1056	1.65
<b>RBD018</b>	100.00	2.00	1.54	0.93	815	2.13
<b>RBD024</b>	159.00	10.60	0.50	0.34	278	0.71
incl.	167.00	2.60	0.77	0.16	394	0.90

NiEq (% nickel equivalent) based on US\$19,000/t Ni, US\$9,000/t Cu, US\$32,000/t Co, using the formula  $Ni\% + (0.524 \times Cu\%) + (1.22 \times 10^{-4} \times Co \text{ ppm})$ .  
 Equal Recovery Assumed.





RBD002: 12.0m @ 1.42% Ni, 0.54% Cu, 0.09% Co (1.82% NiEq) from 70.0m

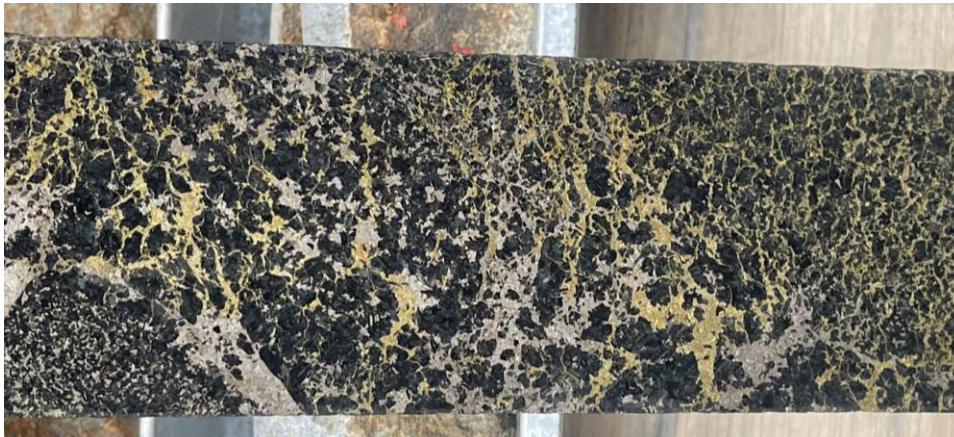


RBD009: 13.8m @ 1.76% NiEq from 51.6m incl. 5.4m @ 2.04% Ni, 0.56% Cu, 0.10% Co (2.46% NiEq) from 60m

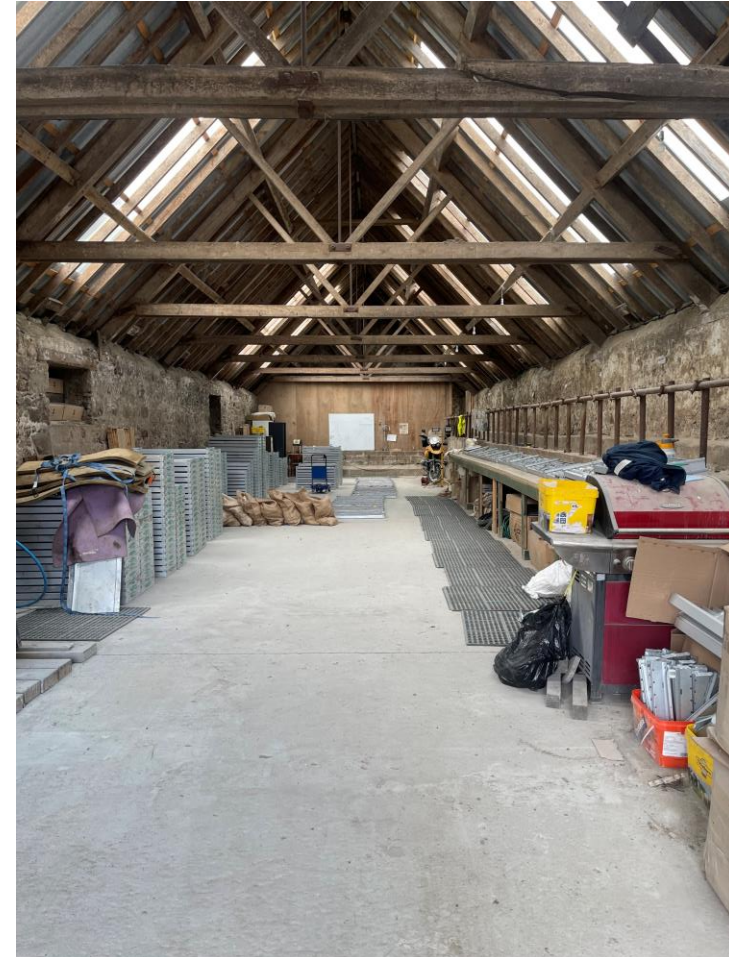




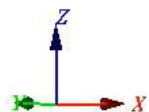
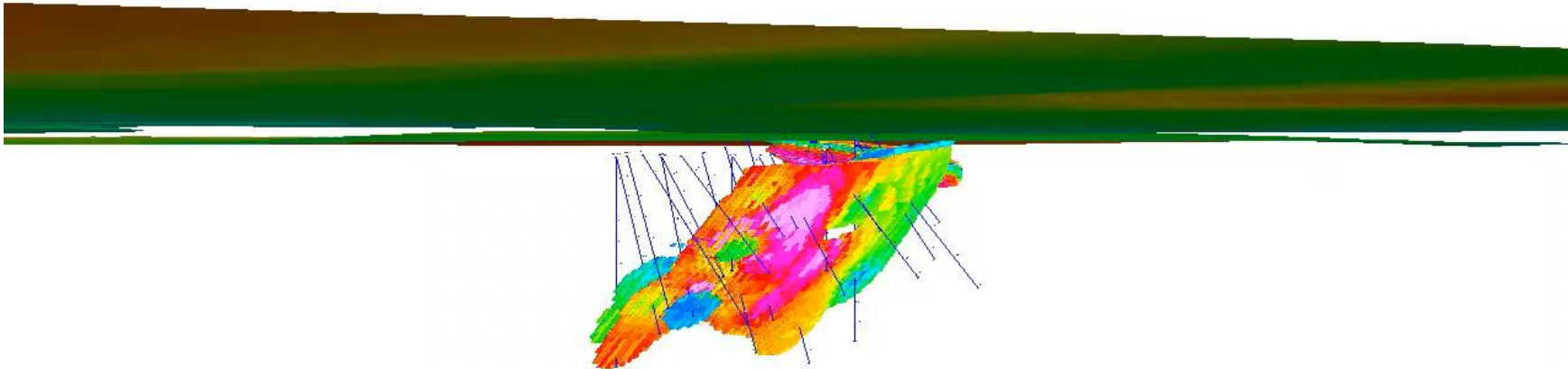
*Massive sulphide with coarse pentlandite (Ni-sulphide)*



*Net texture chalcopyrite and pyrrhotite sulphides*

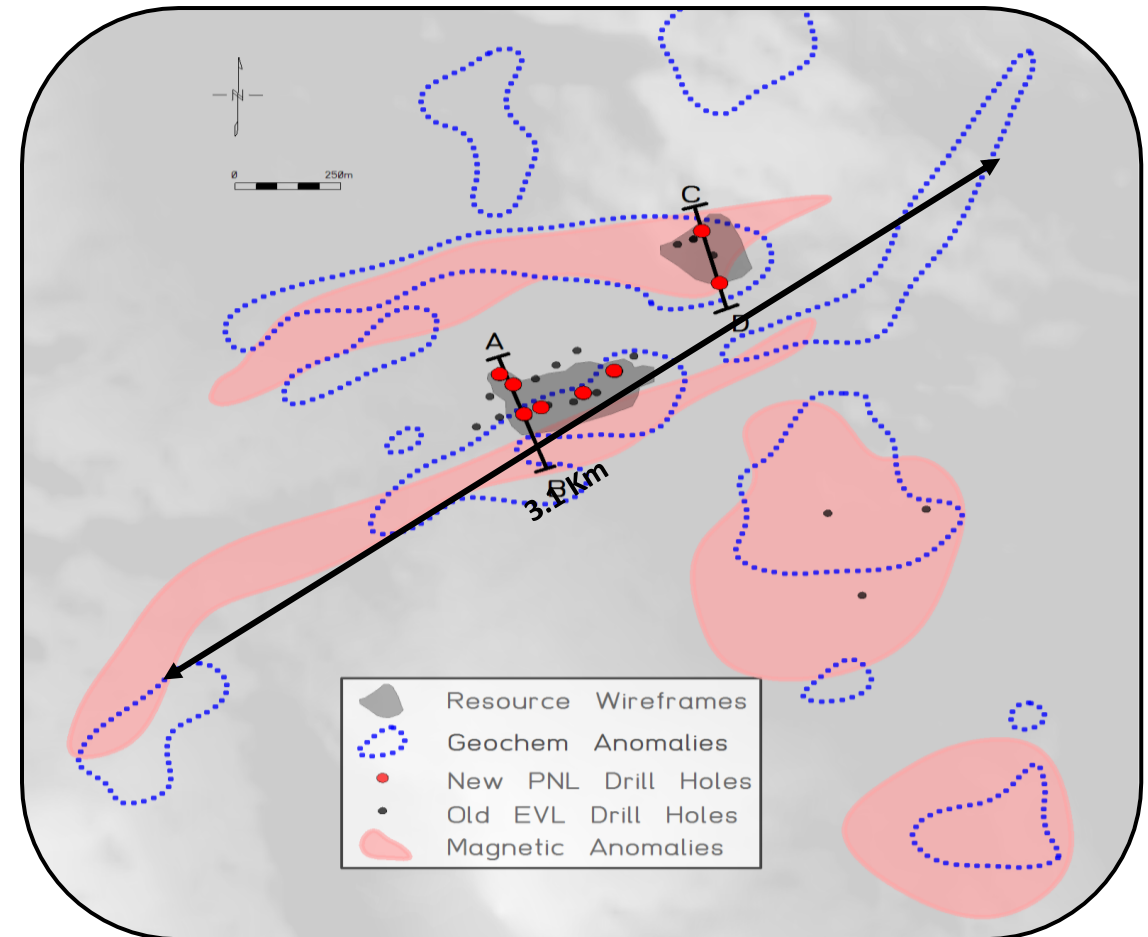


*Core shed at Portsoy Project*



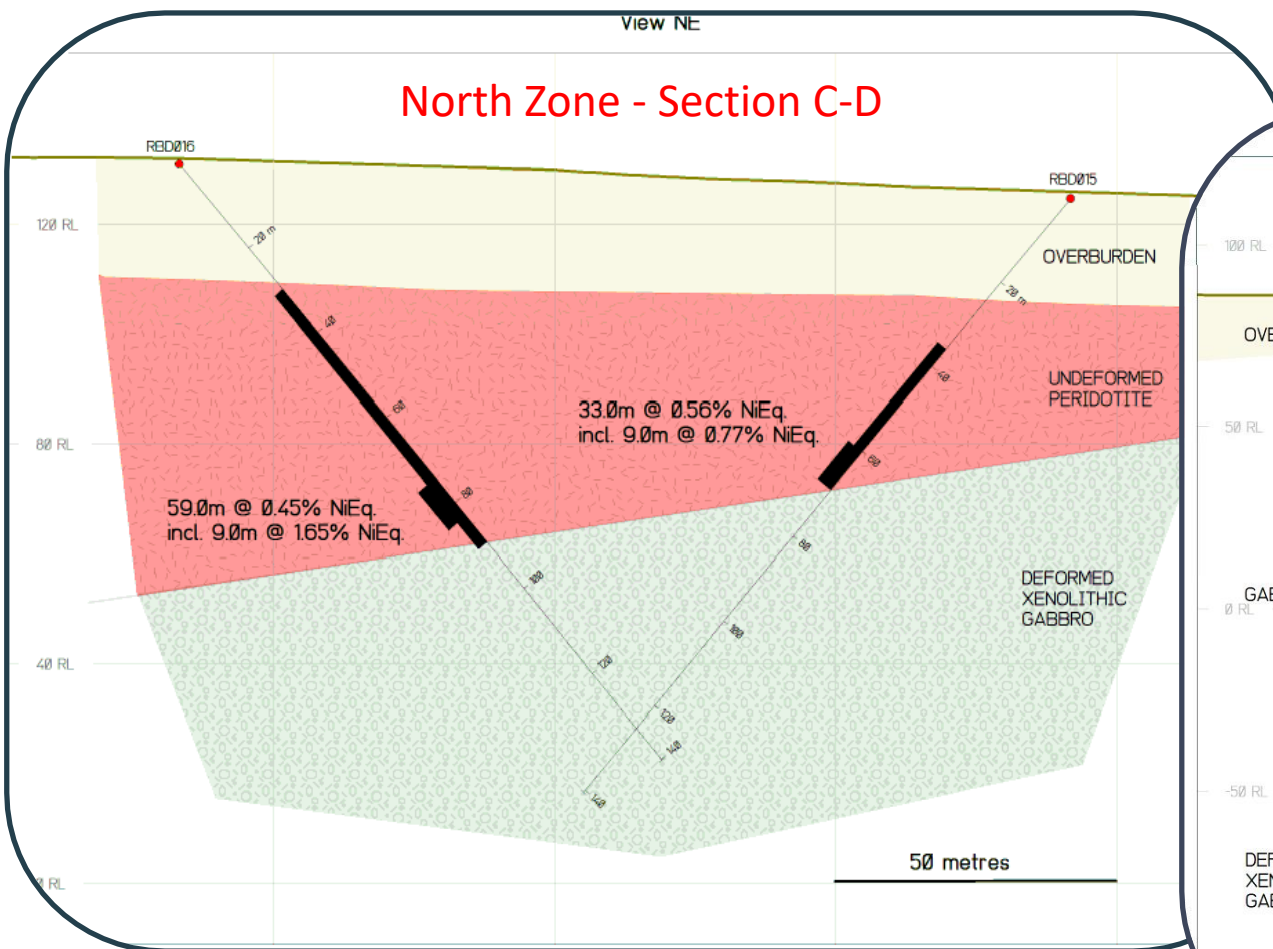
## RODBURN TARGET

- Two mineralised zones drilled to date (the South and North Zones)
- Geologically similar & 600m apart
- Both zones wide open
- More drilling needed to test true strike & down-dip potential
- Geochemical & geophysical signatures indicate structures are over 3km long
- Numerous other large targets within 2km

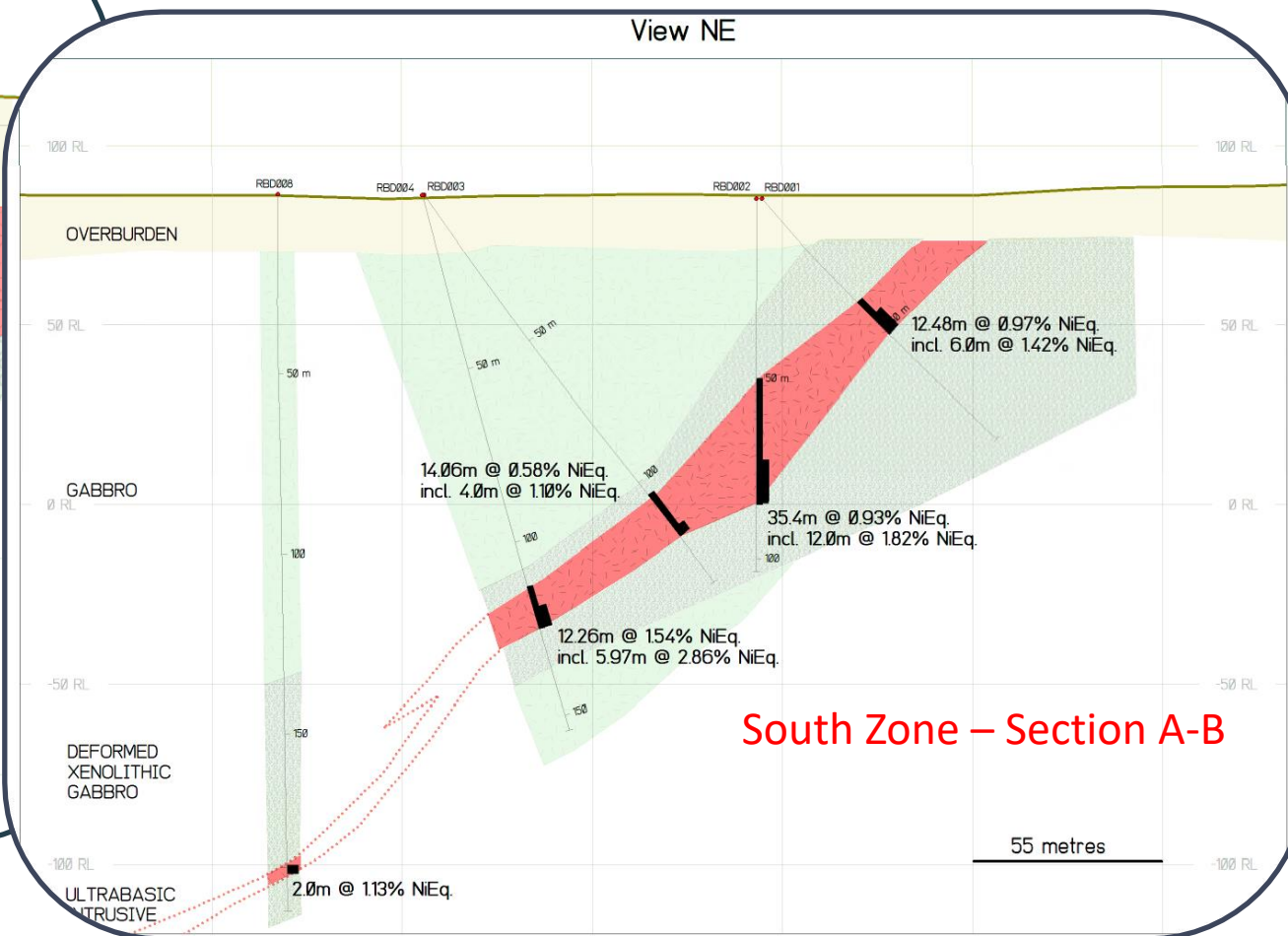




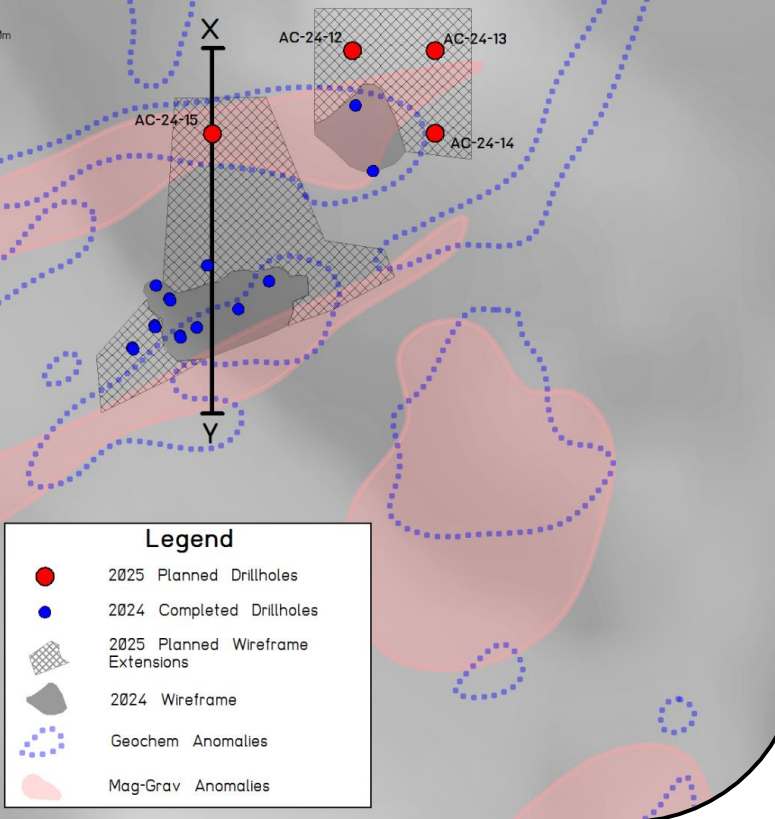
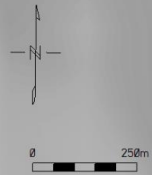
## North Zone - Section C-D



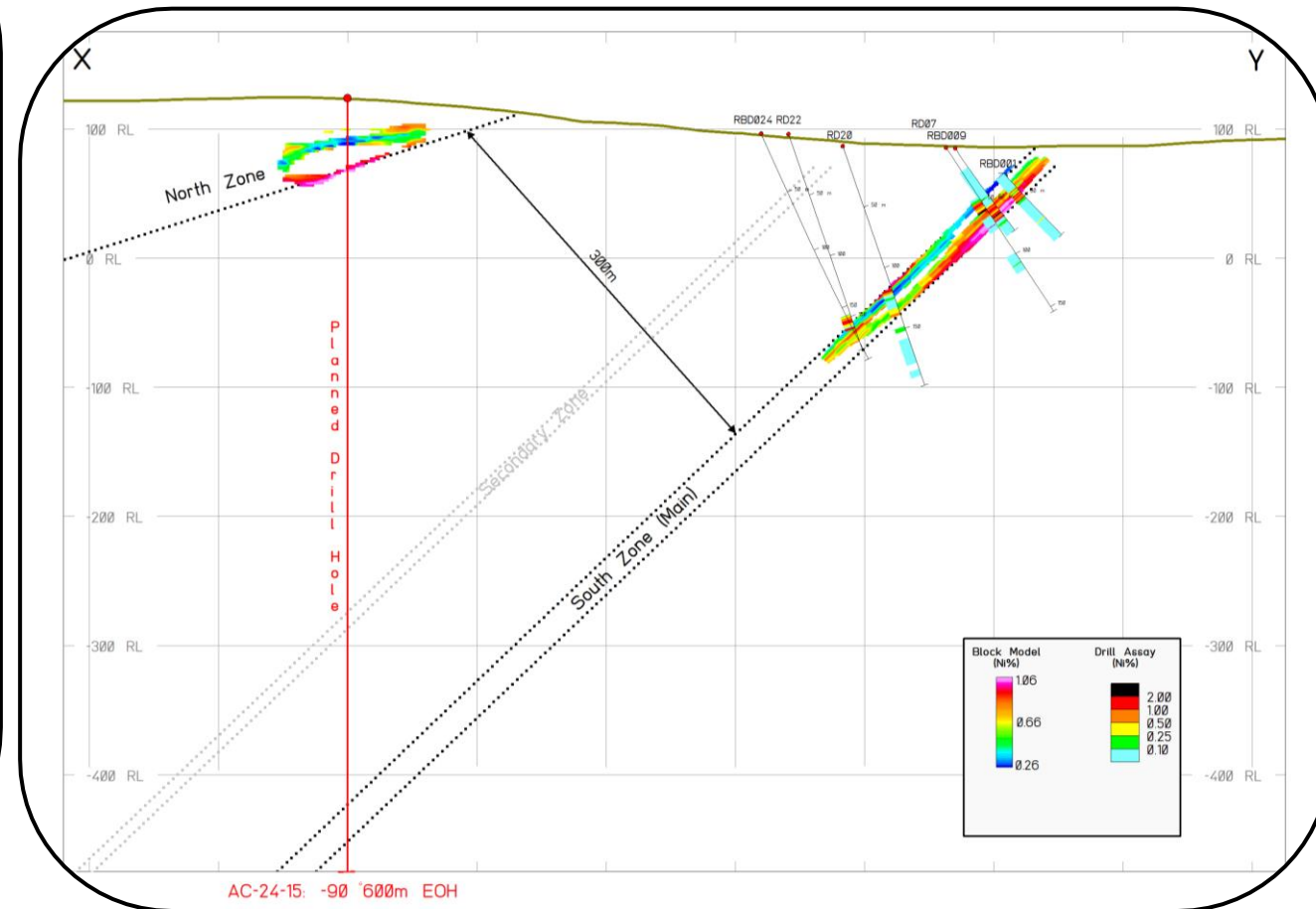
## South Zone – Section A-B



## 2026 planned drilling



## Section X-Y



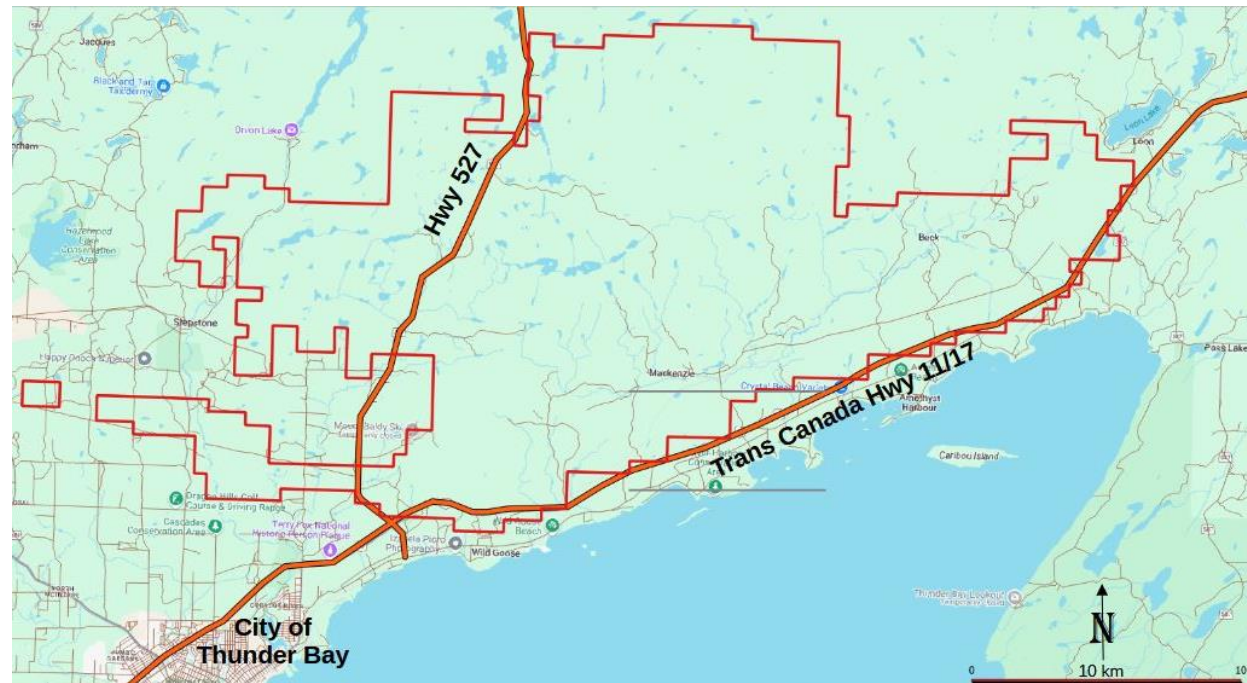
## PORTSOY PROJECT SUMMARY

- Geochem anomalies indicate district-scale potential for Ni-Cu-Co mineralisation
- Rodburn is the most advanced / highest grade Ni-Cu-Co target in the UK
- Drilling indicates potential for a large near-surface Ni-Cu-Co resource
- Exploration and mineral rights secured – 100-year mining rights, subject to planning
- Multiple other geochemical / geophysical targets to test outside of Rodburn





## THE THUNDER BAY GOLD PROJECT



- Eastern extension of the Archaean Shebandowan Greenstone Belt
- Very little historic exploration
- Excellent infrastructure
- Potential for orogenic gold, volcanogenic massive sulphide, and Ni-Cu-Co-PGE deposits



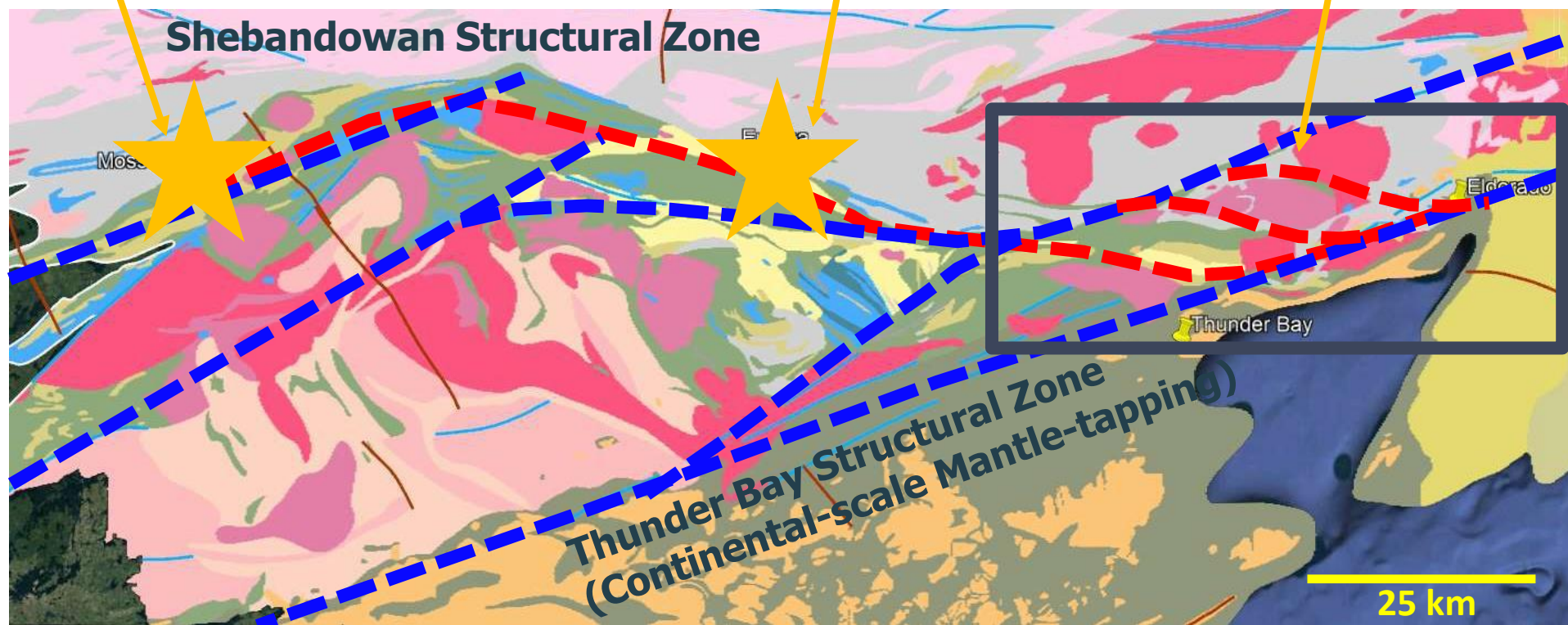
## MOSS LAKE GOLD PROJECT

- Ind. Resource – 1.5 Moz at 1.23 g/T Au
- Inf. Resource – 5.2 Moz at 1.11 g/T Au

## EUREKA GOLD PROJECT

Geologic Target  
 60 Mt at +1g/T Au

## THUNDER BAY GOLD PROJECT AREA



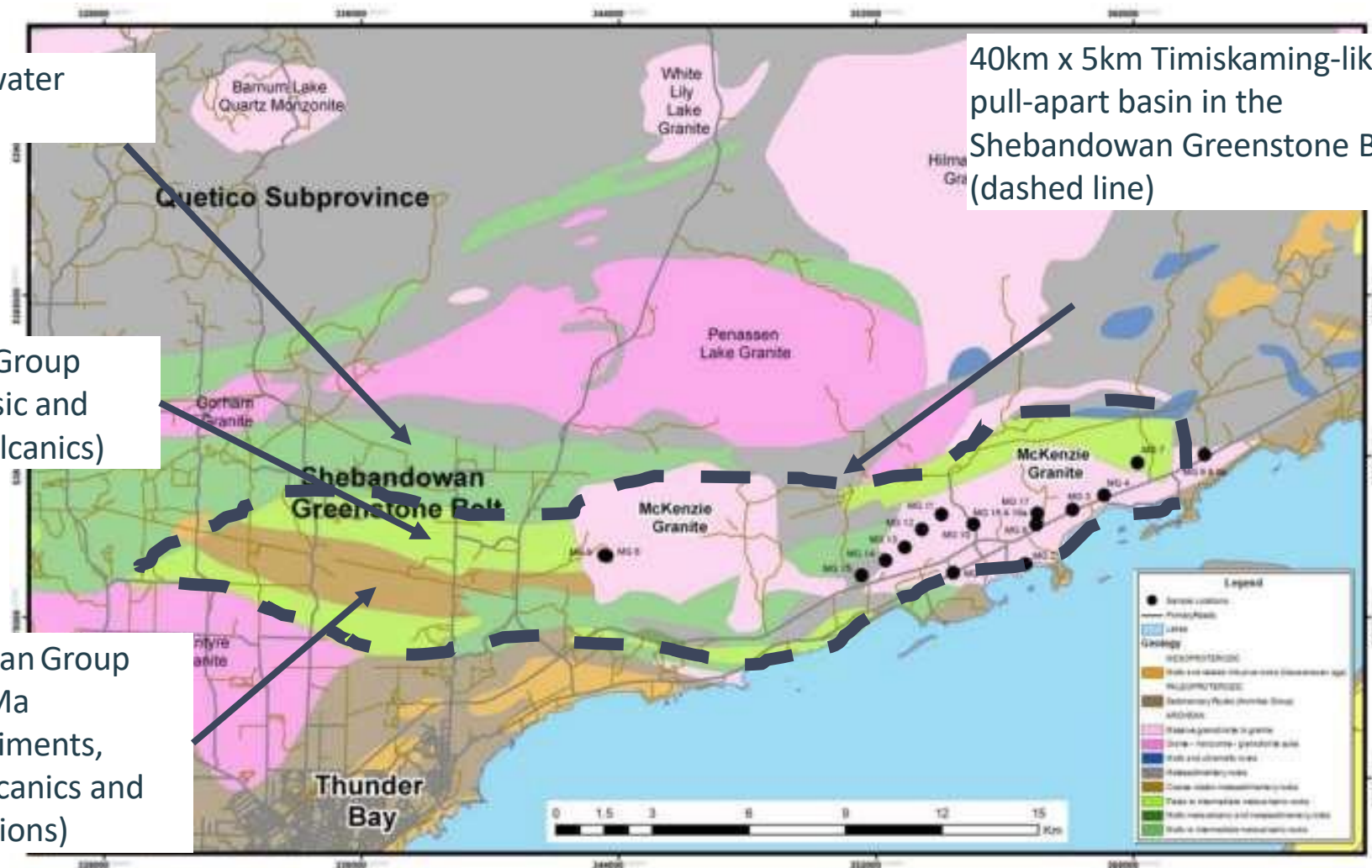
## THUNDER BAY GOLD PROJECT - GEOLOGY

Older Greenwater  
Assemblage

Kashabowie Group  
2690Ma (Felsic and  
Komatiitic Volcanics)

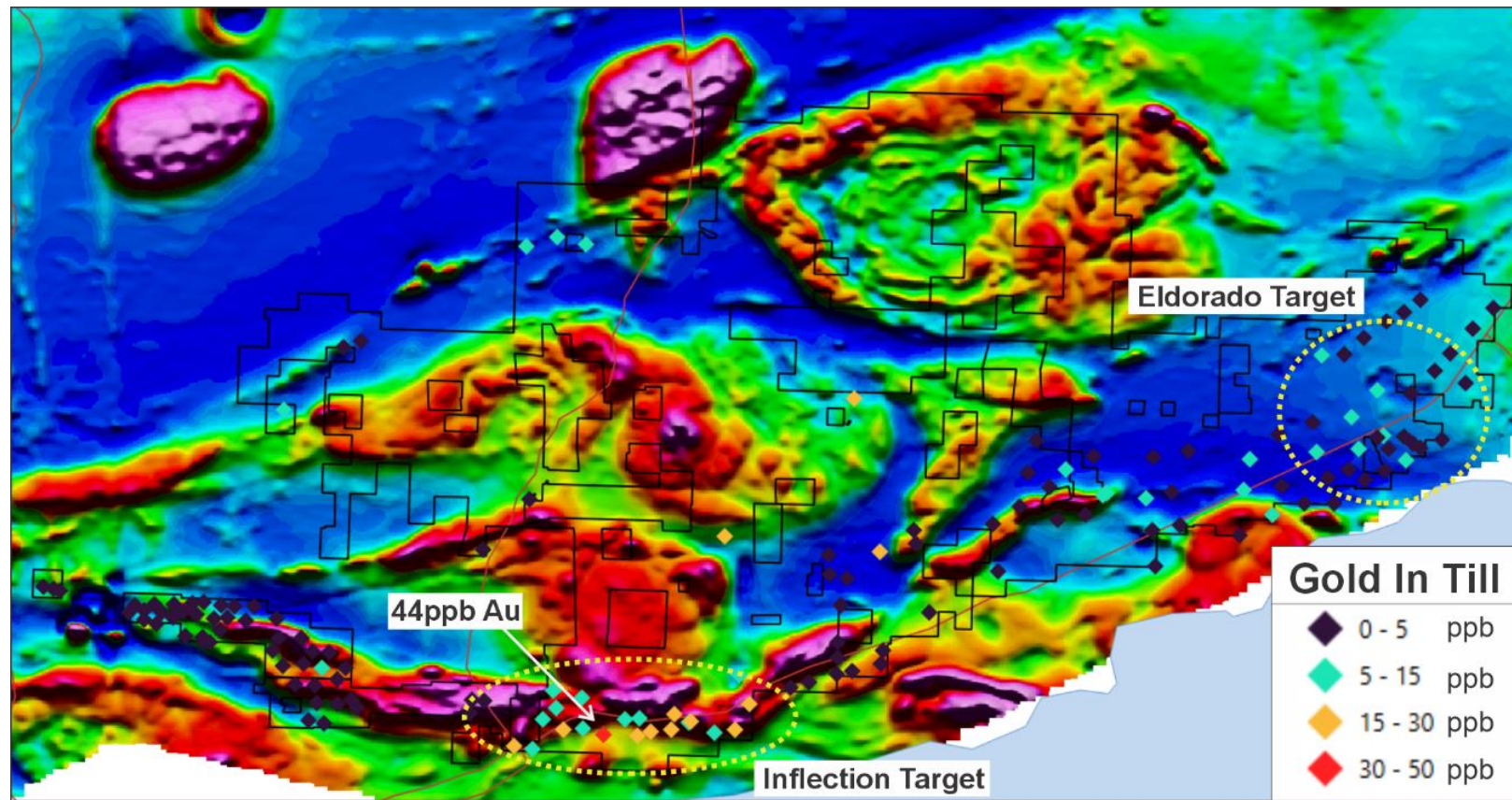
Shebandowan Group  
2670-2680Ma  
(Coarse Sediments,  
Alkaline Volcanics and  
Felsic Intrusions)

40km x 5km Timiskaming-like  
pull-apart basin in the  
Shebandowan Greenstone Belt  
(dashed line)





## PHASE 1 TILL SAMPLING – INFLECTION TARGET



Inflection is located at the intersection of several major structures and along the southern margin of a rigid granite body

**Stephen Leahy - Chairman**

Former CEO & Chairman of North American Tungsten, Director of Oroco Resource Corp

**Richard Williams - CEO & Director**

Co-Founder of Winshear, former CEO & Director of Cornish Metals

**Patricio Varas – President & Director**

Former CEO of Western Potash, and executive management with Far West Mining (Santo Domingo Sur). Also involved in discovery of Diavik Diamond Mine

**Mark Sander - Director**

Former VP Strategy and Planning for BHP Copper. Founding Partner of Plinian Capital

**Andrew MacRitchie - Director**

CFO of Skeena Resources Limited

**Daniele Spethmann - Director**

Former CEO of Warrior Gold

**Krysta Chapman - CFO**

CFO of Ideon Technologies; Former Treasurer of Sandstorm Gold





TSX-V:WINS  
winshear.com

# THANK YOU

for further inquiries please contact:

Richard Williams

email: [richard@winshear.com](mailto:richard@winshear.com)

[winshear.com](http://winshear.com)